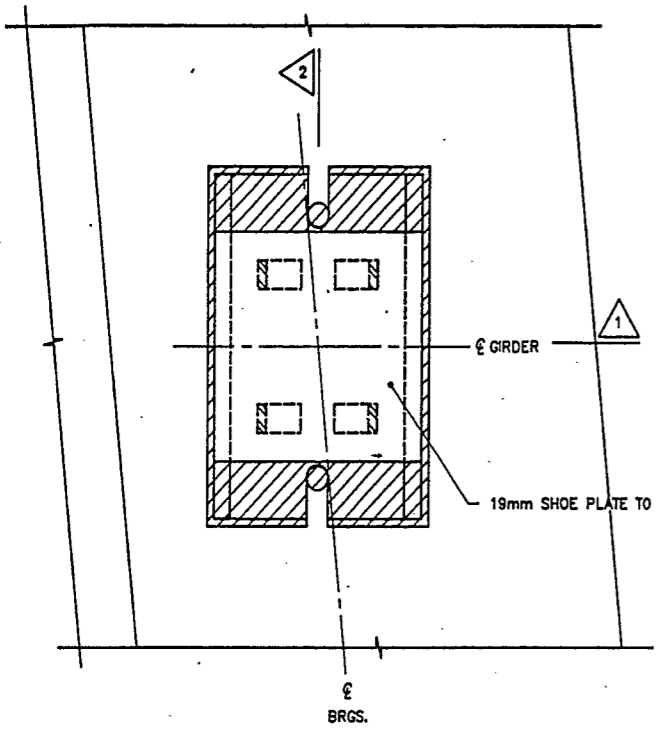


MINISTRY OF TRANSPORTATION, ONTARIO

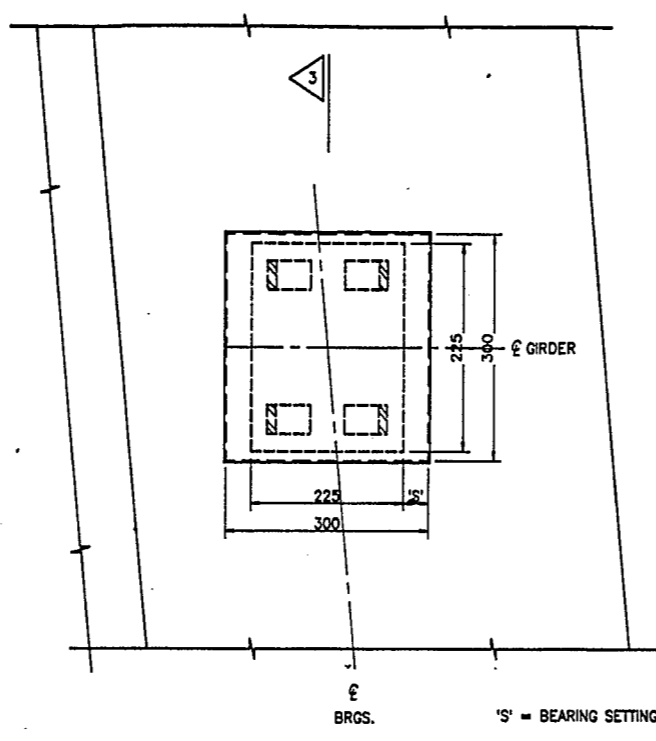
**METRIC**

DIMENSIONS ARE IN METRES  
AND/OR MILLIMETRES  
UNLESS OTHERWISE SHOWN

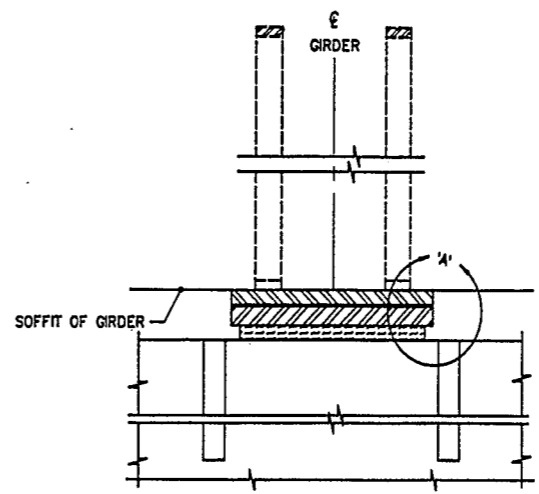
DIST.		
CONT No	92-43	
WP No	1-83-02	
HWY. 31 U PASS (HWY. 401)		SHEET 34
BEARING DETAIL		



PLAN - EXISTING BEARING  
SCALE 1:5



PLAN - NEW BEARING  
SCALE 1:5  
'S' = BEARING SETTING (SEE TABLE)



3  
SCALE 1:5

**NOTES:**

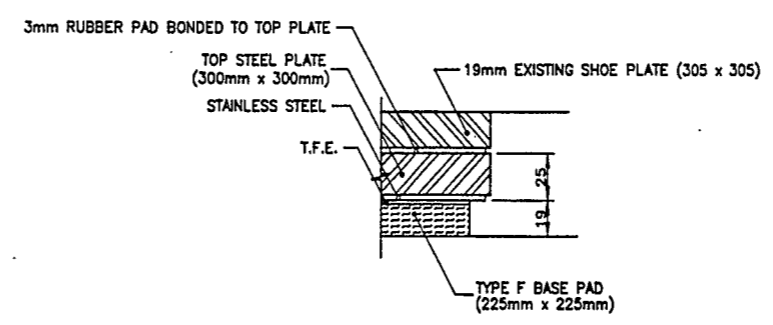
- BEARINGS ARE GOODCO BRIDGE BEARINGS SERIES ET AS MANUFACTURED BY GOODCO LIMITED.
- ALL EXPOSED CORRODABLE SURFACES OF BEARING ASSEMBLY TO BE METALLIZED.
- ABRASIVE BLAST CLEAN EXPOSED SURFACES OF EXISTING SHOE PLATE TO SSPC-SP6-89 COMMERCIAL BLAST CLEAN BEFORE INSTALLING NEW BEARINGS.
- BEARING SEAT SURFACES TO BE INSPECTED AND APPROVED BY ENGINEER PRIOR TO SETTING BEARINGS.
- TEMPERATURE FOR BEARING SETTINGS IS THE AVERAGE TEMPERATURE OF THE CONCRETE IN THE 'T' BEAMS.
- TOP PLATE OF BEARINGS TO BE CENTERED ON EXISTING SHOE PLATES.
- COMBINED OVERALL HEIGHT OF BEARING ASSEMBLY TO BE EXACTLY 47mm WITH TOLERANCE +1mm - 0mm.
- JACKING FORCE SHOWN IS MAXIMUM DEAD LOAD + LIVE LOAD AT SLS II AT ZERO DEFLECTION.

TEMP. DEG. C	0	5	10	15	20	25	30
S	37	35	33	31	29	28	24

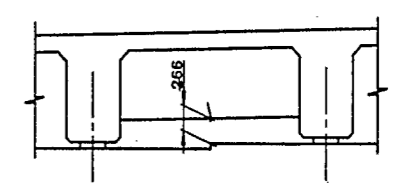
	• ULS	• SLS
DEAD	110	90
DEAD + LIVE	475	385

**LEGEND**

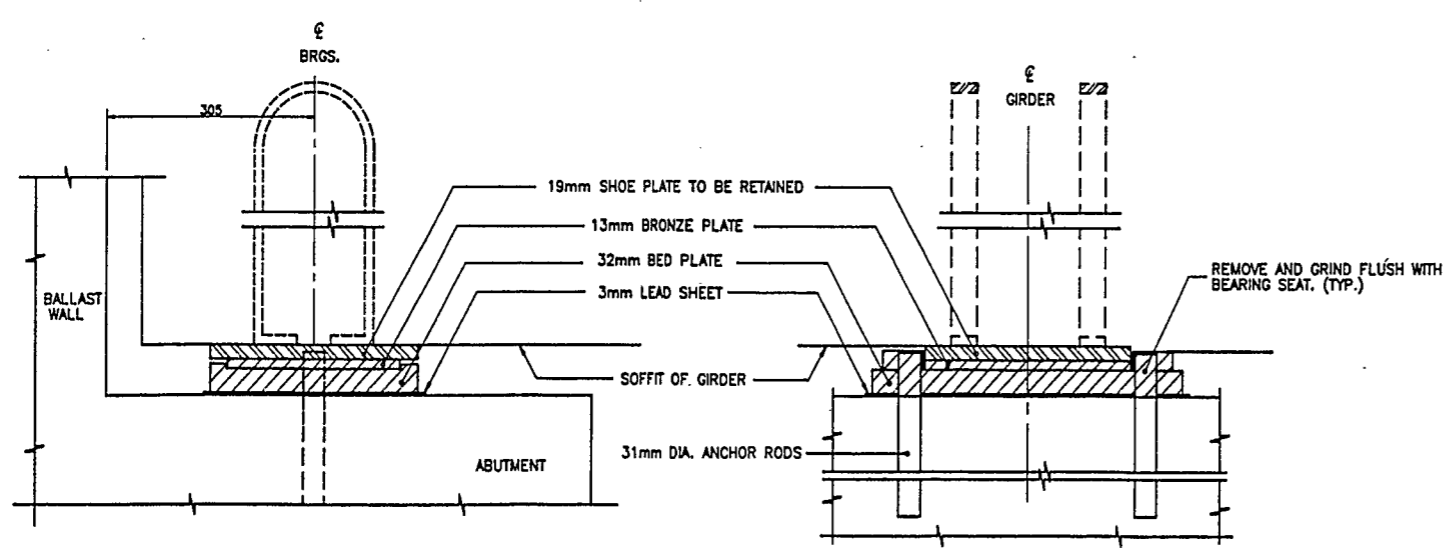
TYPICAL REMOVALS



DETAIL A  
1:2

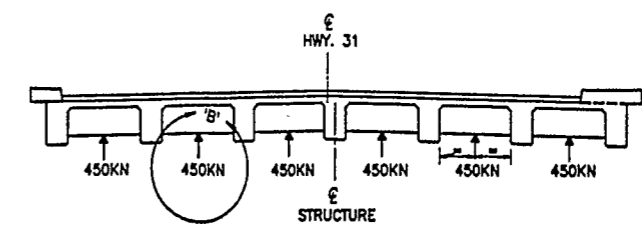


DETAIL 'B'  
SCALE 1:40



1  
SCALE 1:5

2  
SCALE 1:5



JACKING LOCATIONS AND FORCES  
SCALE 1:100



DRAWING NOT TO BE SCALED  
100 mm ON ORIGINAL DRAWING

DATE	BY	DESCRIPTION
DESIGN	HK	CHK QI CODE
DRAWN	AR	CHK TUN SITE

LOAD DATE AUG. 81  
31-204 STRUCT SCHEME R2 DWG 3

DRAWING FILE NAME: R3120493.DWG