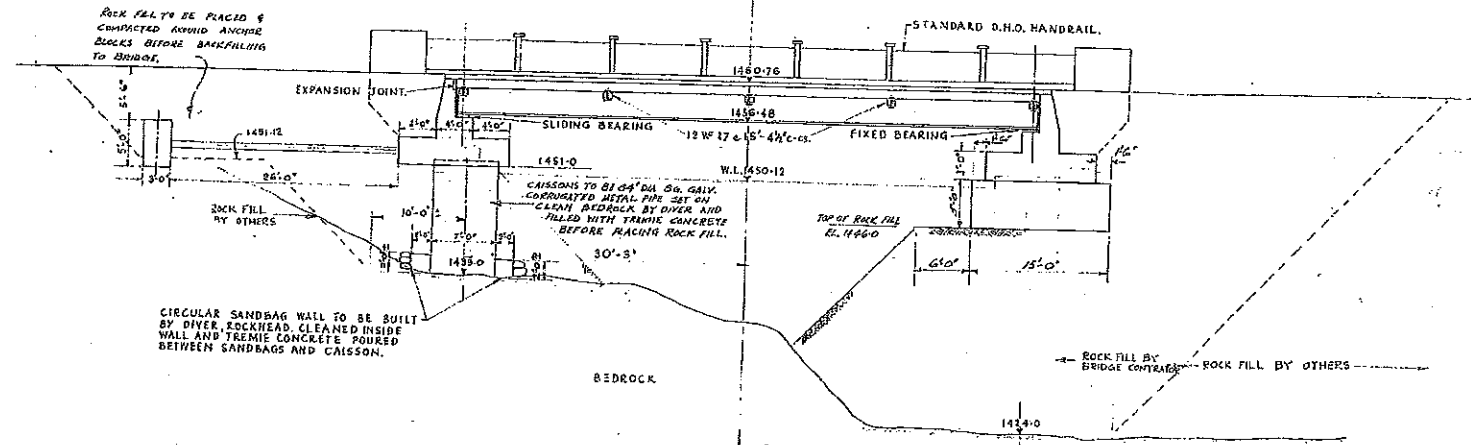
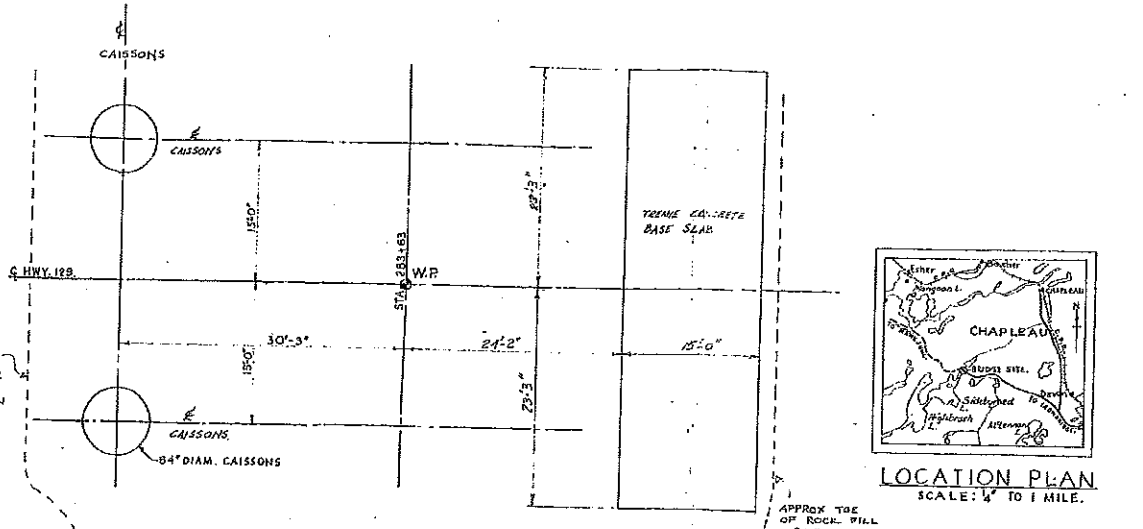


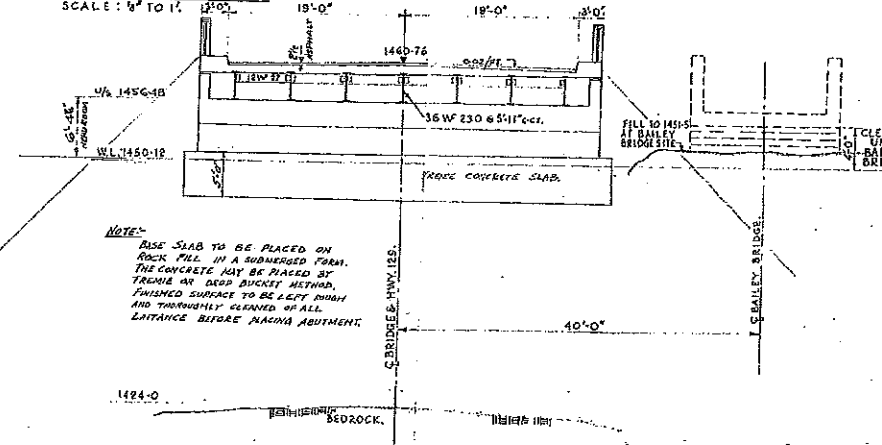
PLAN
SCALE: 5\"/>



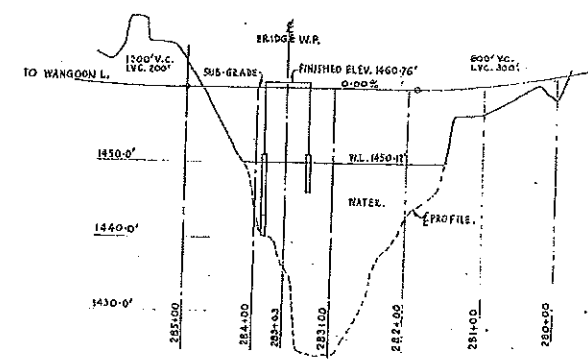
SECTION A-A
SCALE: 5\"/>



FOUNDATION LAYOUT
SCALE: 5\"/>



SECTION B-B
SCALE: 5\"/>



PROFILE AT BRIDGE SITE
SCALES: HORIZ. 1\"/>

NO.	FOR	DATE
1
2
3
4
5
6
7
8
9
10
11
12

E.O. 56234 DWS. J. 485 W.P. 86-50

PROCTOR & REDFERN,
CONSULTING ENGINEERS, TORONTO.

DEPARTMENT OF HIGHWAYS, ONTARIO
BRIDGE OFFICE, TORONTO

**BRIDGE OVER
SIDEBURNED LAKE.**

THE KING'S HIGHWAY No. 129. DIST. No. 19.
CO. LOT 12 CON. 2
TWP. CHAPLEAU. LOT 12 CON. 2

67340 GENERAL ARRANGEMENT.

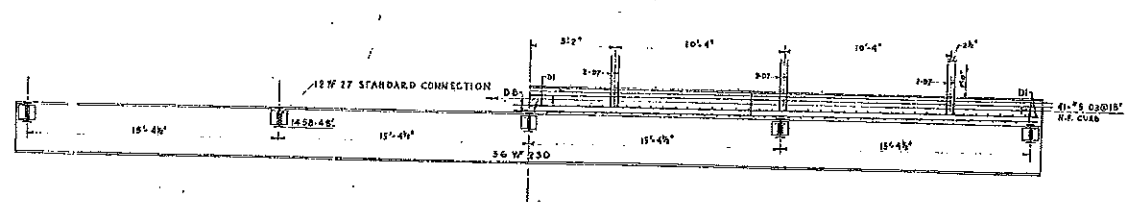
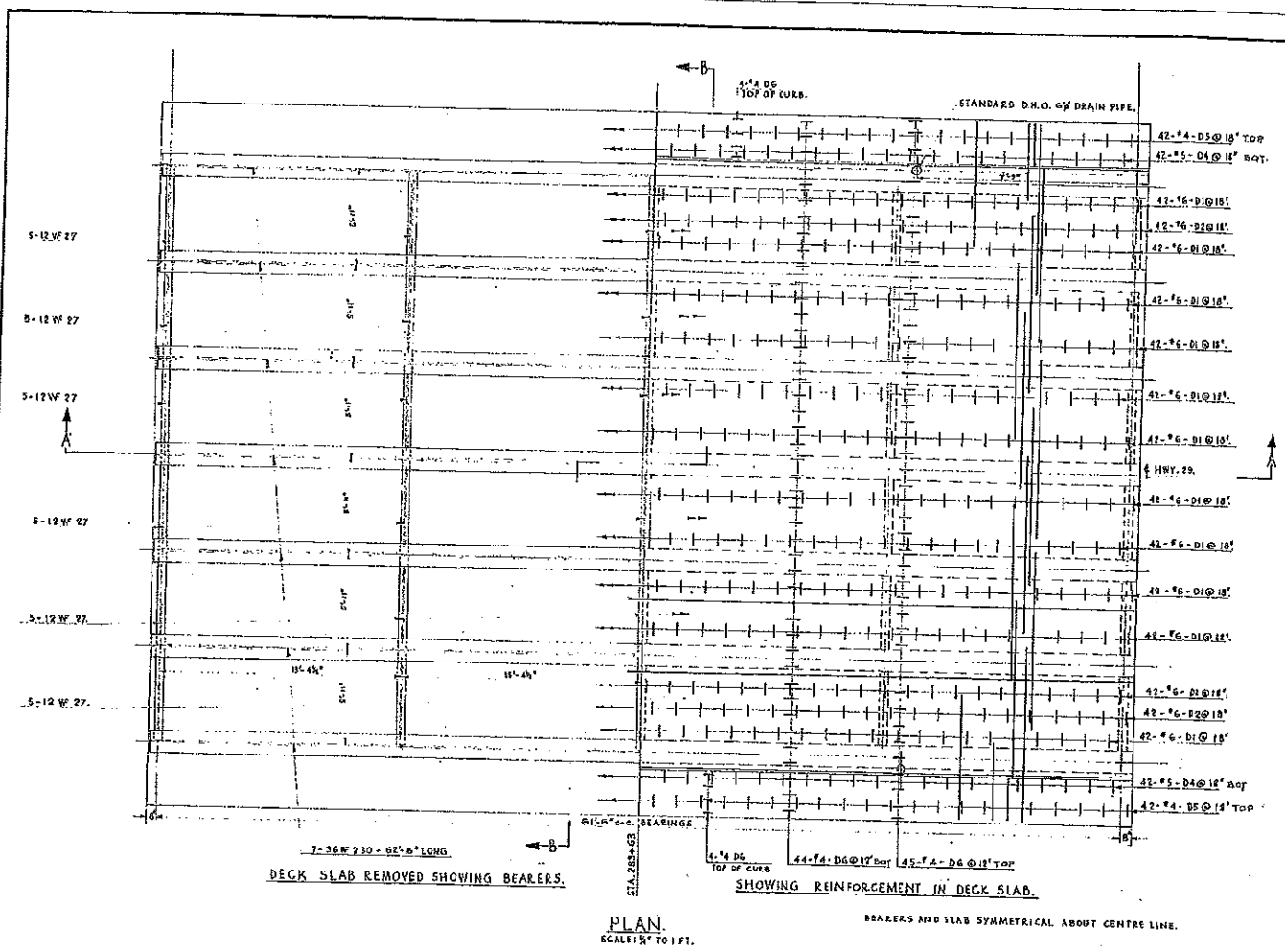
APPROVED *Am. L.*
BRIDGE ENGINEER

DESIGNER *L. G. B.* CHECKER *W. J. C.* CONTRACT NUMBER *57-37*
DRAWN *W. J. C.* CHECKER *W. J. C.* LOADS BRIDGE NO. *0-3847-1*
DATE, JUNE 1937. DESCRIPTION

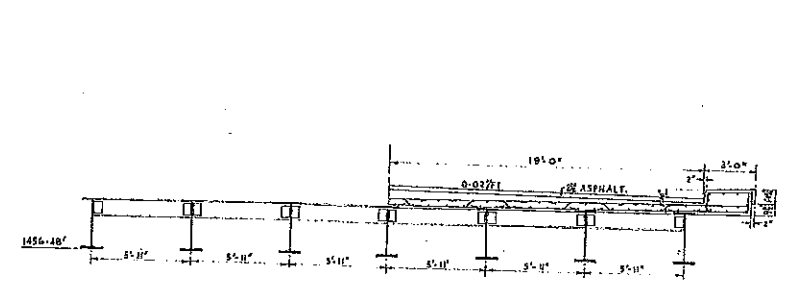
REVISIONS:

NO.	DATE	BY	DESCRIPTION
1	5.21.37	L.G.B.	SOUTH CAISSONS & TIES DELETED, BASE SLAB ON ROCK FILL ADDED
2	5.21.37	L.G.B.	BRIDGE MOVED 15'-0\"/>

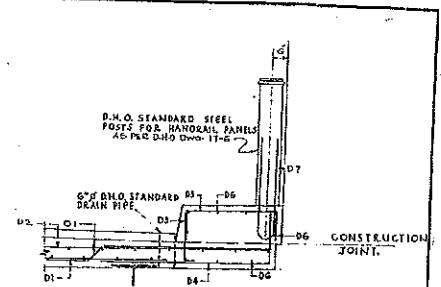
TWP. # 426-15-1-A



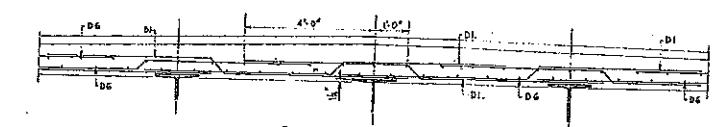
SECTION A-A
SCALE: 1/2" TO 1 FT.



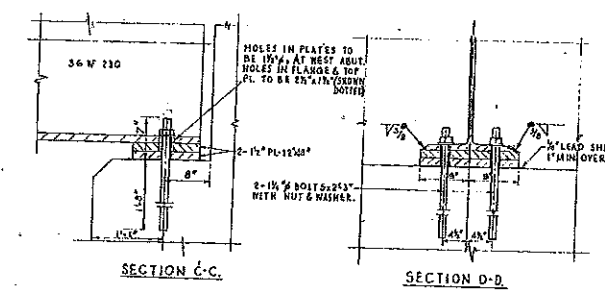
SECTION B-B
SCALE: 1/4" TO 1 FT.



CURB DETAIL
SCALE: 1/4" TO 1 FT.

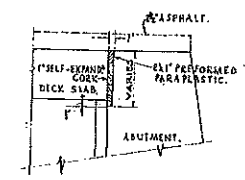


SLAB DETAIL
SCALE: 1/2" TO 1 FT.

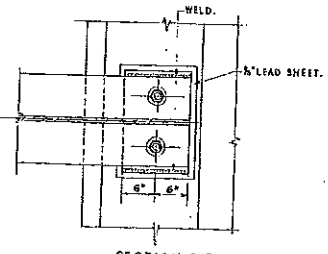


SECTION C-C

SECTION D-D



EXPANSION JOINT
SCALE: 1" TO 1 FT.



DETAIL OF BEARINGS
SCALE: 1" TO 1 FT.

GENERAL NOTES.

1. CONCRETE WORK ON THIS STRUCTURE SHALL NOT BE COMMENCED UNTIL MONUMENTS TO FIX CONTROL POINTS HAVE BEEN ERECTED AND CHECKED BY THE DISTRICT ENGINEER.
2. THE DESIGN, FABRICATION AND ERECTION OF THE STRUCTURAL STEEL SHALL BE IN ACCORDANCE WITH THE C.S.A. SPECIFICATION FOR STEEL HIGHWAY BRIDGES, 1945-46, THE FINISHING OF THE STRUCT. STEEL SHALL BE IN ACCORDANCE WITH FORM AND EXH. MAR. 37 AND THE SPECIAL PROVISIONS, EXTRA COPIES OF WHICH MAY BE OBTAINED FROM THE DISTRICT ENGINEER.
3. ALL CONCRETE SHALL BE 3000 PSI AT 28 DAYS MAXIMUM SIZE AGGREGATE 1" AND 1/2 LB. POZZOLITH 15' PER BAG OF CEMENT.
4. ALL EXPOSED CORNERS TO HAVE 1" CHAMFER.
5. ALL REINFORCING STEEL SHALL BE 10,000 P.S.I. BILLET OR RAIL STEEL, DEFORMED BARS FOR REINFORCEMENT CONFORMING WITH C.S.A. SPEC. Q30.
6. NO CONCRETE TO BE PLACED ABOVE BRIDGE SEAT ELEVATION UNTIL STRUCTURAL STEEL IS ERECTED.
7. COVER TO REINFORCEMENT SHALL BE: 3" WHERE SURFACE IS IN CONTACT WITH FILL OR WATER. 2" IN WALLS AND ABUTMENTS. 1 1/2" ELSEWHERE.

NOTE TO GENERAL CONTRACTOR:

GENERAL CONTRACTOR TO FINISH THE BRIDGE SEATS DEADLEVEL, 1/2" HIGHER THAN FINISHED ELEVATIONS.

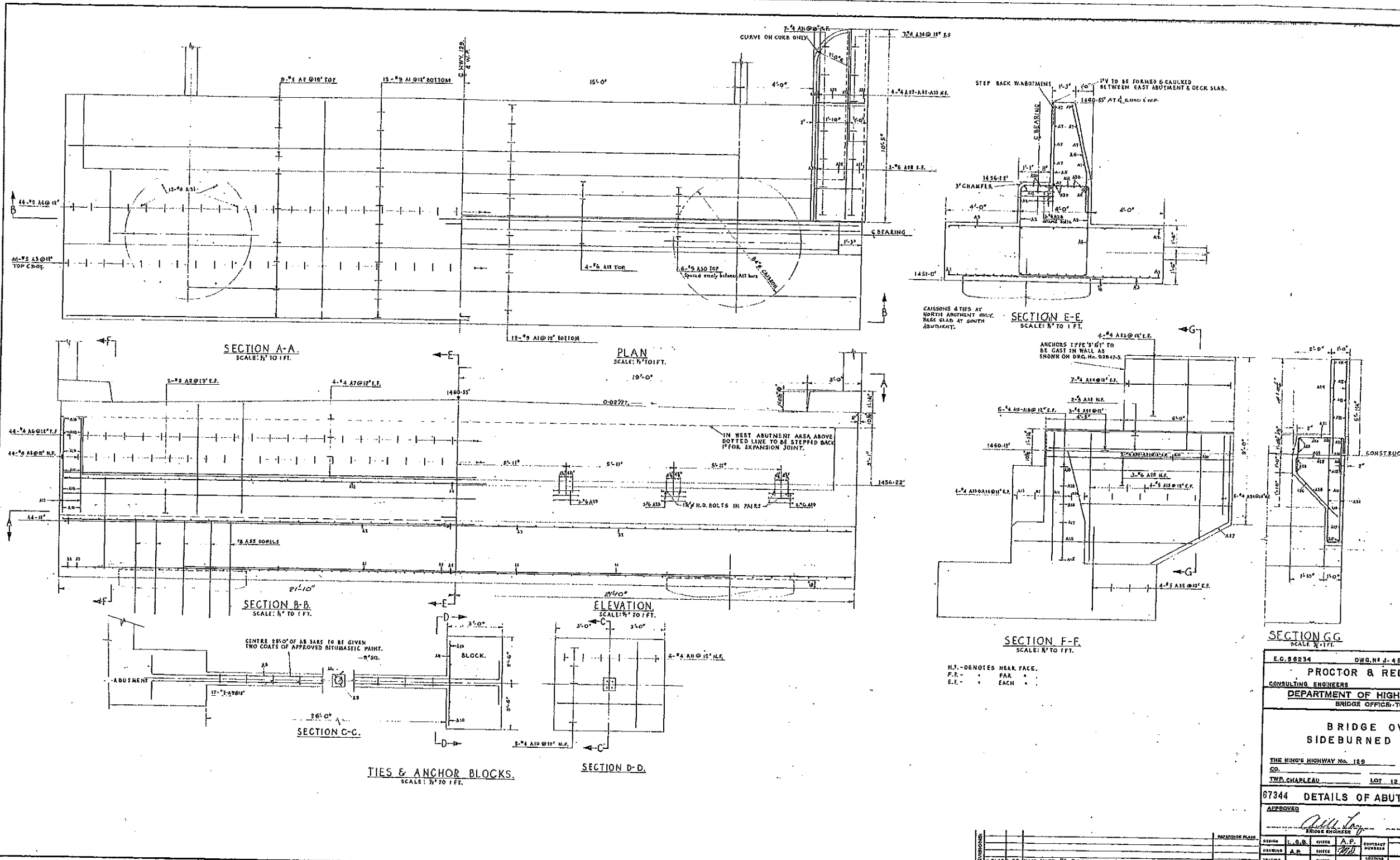
NOTE TO STEEL CONTRACTOR:

STEEL CONTRACTOR TO BUSH HAMMER AND GRIND THE BRIDGE SEATS DOWN TO THE FINISHED ELEVATIONS AS SHOWN. ANY DISCREPANCY IN THE FINISHED ELEVATIONS TO BE CORRECTED WITH FULL BEARING SHIM PLATES PROVIDED AND PLACED BY THE STEEL CONTRACTOR. THE USE OF GROUT IS PROHIBITED.

NO.	REV.	DATE	DESCRIPTION
1			
2			
3			
4			
5			
6			
7			
8			
9			
10			
11			
12			

E.O. 66234	DWG. NO. J-484	W.P. 68-56
PROCTOR & REDFERN		
CONSULTING ENGINEERS TORONTO		
DEPARTMENT OF HIGHWAYS-ONTARIO		
BRIDGE OFFICE-TORONTO		
BRIDGE OVER		
SIDE BURNED LAKE		
THE KING'S HIGHWAY No. 188	DIST. No. 18	
CO. TWB CHAPLEAU	LOT 12	CON. 2
DETAILS OF DECK SLAB		
APPROVED: <i>[Signature]</i>		
BRIDGE ENGINEER		
DESIGNER	CHECKER	DATE
A. P.	A. P.	5-7-57
DESIGNED BY	CHECKED BY	DATE
A. P.	A. P.	5-7-57
DESIGNED BY	CHECKED BY	DATE
A. P.	A. P.	5-7-57
DATE	JUNE 1957	
D-3847-2		

486-15-2-A



NO.	REV.	DATE	DESCRIPTION
1			
2			
3			
4			
5			
6			
7			
8			
9			
10			

E.O. 86234 DWG. NO. J-481

PROCTOR & RED
CONSULTING ENGINEERS

DEPARTMENT OF HIGHWAY
BRIDGE OFFICER-T.C.

**BRIDGE ON
SIDE BURNED**

THE KING'S HIGHWAY No. 129
CO. _____
TWP. CHARLEAU LOT 12

67344 DETAILS OF ABUT

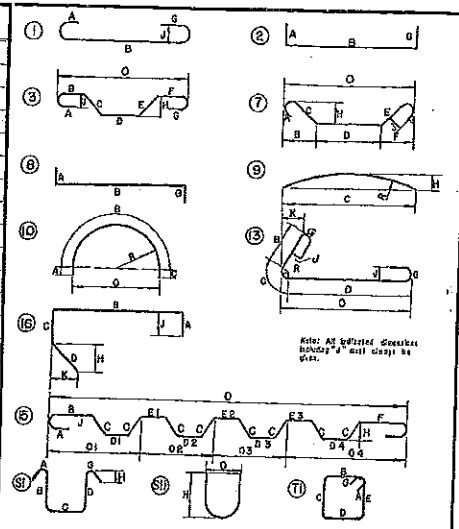
APPROVED _____
BRIDGE ENGINEER

DESIGNED	E. G. B.	CHECKED	A. P.	CONTRACT NUMBER
DRAWN	A. P.	CHECKED	[Signature]	BRIDGE
TRACED		CHECKED		HEO-818
DATE	JUNE 1957	DESCRIPTION		

Top 486

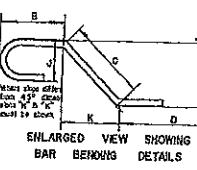
MARK	NO. BARS	SIZE	LENGTH	TYPE	A	B	C	D	E	F	G	H	J	K	O	R	SHAPE	LOCATION
DECK SLAB																		
D1	504	#6	10'-0"	3		5'-0"	8'-6"	4'-11"										SLAB.
D2	84	#6	7'-11"	-														SLAB.
D3	84	#5	2'-0"	8	6"	2'-6"												HANDRAIL (SLAB)
D4	84	#5	6'-4"	8	1'-6"	4'-10"												
D5	84	#4	4'-2"	2	10'	2'-6"				10'								
D6	202	#4	32'-0"	-														SLAB.
D7	24	#6	6'-2"	5								3'-0"			5'			HANDRAIL POSTS.
ABUTMENTS																		
A1	48	#9	36'-8"	-														MAIN SLAB
A2	52	#5	22'-9"	-														
A3	176	#5	11'-8"	-														
A4	88	#5	17'-8"	11	7'	3'-8"	4'-7"	3'-8"	4'-7"	7'								MAIN BEAM.
A5	88	#4	6'-9"	-														BACK STAND.
A6	88	#4	6'-6"	16			4'-0"	2'-6"				2'-6"		7 1/2"				
A7	36	#4	22'-6"	-														
A8	8	#8	33'-8"	2	1'-0"	3'-8"						1'-0"						TIE
A9	34	#2	2'-0"	11	4'	4'	4'	4'	4'	4'								
A10	10	#4	3'-8"	-														ANCHOR BLK.
A11	12	#4	4'-8"	-														
A12	16	#6	23'-11"	-														MAIN BEAM.
A13	16	#4	5'-0"	-														END WALL.
A14	16	#4	7'-0"	-														
A15	8	#4	7'-6"	-														
A16	8	#4	9'-6"	-														
A17	8	#4	11'-3"	-														
A18	24	#4	11'-8"	-														
A19	32	#5	7'-0"	-														
A20	8	#4	6'-2"	2	8'	3'-6"												
A21	8	#4	6'-11"	2	8'	6'-3"												
A22	12	#4	10'-0"	-														
A23	32	#4	7'-1"	2	8'	5'-9"				8'								
A24	56	#4	4'-10"	-														
A25	32	#5	5'-3"	2	8'	4'-9"												
A26	24	#4	5'-3"	16		1'-11"	3'-4"				2'-6"	2'-6"						
A27	8	#4	9'-3"	16		4'-6"	4'-9"				2'-3"	4'-3"						
A28	20	#6	10'-0"	-														
A29	48	#6	6'-8"	11	3'	1'-4"	1'-9"	1'-4"	1'-9"	3'								
A30	24	#5	12'-0"	-														
A31	28	#4	4'-2"	2	10'	2'-6"												
A32	4	#4	9'-8"	-														
A33	8	#4	8'-6"	-														
A34	28	#4	4'-0"	2	10'	2'-4"												
A35	48	#8	7'-10"	-														CAISSON TOP.

MARK	NO. BARS	SIZE	LENGTH	TYPE	A	B	C	D	E	F	G	H	J	K	O	R	SHAPE	LOCATION
------	----------	------	--------	------	---	---	---	---	---	---	---	---	---	---	---	---	-------	----------



NOTES

- All dimensions are in feet and inches.
- "X" dimension on lap joints to be shown only when necessary to indicate bar size, otherwise assume 12" to 18".
- Where "X" is not shown, assume 12" to 18" as shown.
- "Y" dimension on lap joints to be shown when necessary to indicate lap.
- Where bars are to be lap jointed, assume the lap joint is made in accordance with the provisions of the Code of Practice for Reinforcing Steel.
- Refer to notes on other sheets.



ALL BARS TO BE DETAILED AS PER A.C.I. SPECIFICATIONS
ALL STEEL TO BE HARD GRADE A HIGH BOND EXCEPT AS NOTED

PRINT RECORD		PROCTOR & REDFERN	
NO.	DATE	NO.	DATE
1	10/1/54	1	10/1/54
2	10/1/54	2	10/1/54
3	10/1/54	3	10/1/54
4	10/1/54	4	10/1/54
5	10/1/54	5	10/1/54
6	10/1/54	6	10/1/54
7	10/1/54	7	10/1/54
8	10/1/54	8	10/1/54
9	10/1/54	9	10/1/54
10	10/1/54	10	10/1/54
11	10/1/54	11	10/1/54
12	10/1/54	12	10/1/54
13	10/1/54	13	10/1/54
14	10/1/54	14	10/1/54
15	10/1/54	15	10/1/54
16	10/1/54	16	10/1/54
17	10/1/54	17	10/1/54
18	10/1/54	18	10/1/54
19	10/1/54	19	10/1/54
20	10/1/54	20	10/1/54
21	10/1/54	21	10/1/54
22	10/1/54	22	10/1/54
23	10/1/54	23	10/1/54
24	10/1/54	24	10/1/54
25	10/1/54	25	10/1/54
26	10/1/54	26	10/1/54
27	10/1/54	27	10/1/54
28	10/1/54	28	10/1/54
29	10/1/54	29	10/1/54
30	10/1/54	30	10/1/54
31	10/1/54	31	10/1/54
32	10/1/54	32	10/1/54
33	10/1/54	33	10/1/54
34	10/1/54	34	10/1/54
35	10/1/54	35	10/1/54
36	10/1/54	36	10/1/54
37	10/1/54	37	10/1/54
38	10/1/54	38	10/1/54
39	10/1/54	39	10/1/54
40	10/1/54	40	10/1/54
41	10/1/54	41	10/1/54
42	10/1/54	42	10/1/54
43	10/1/54	43	10/1/54
44	10/1/54	44	10/1/54
45	10/1/54	45	10/1/54
46	10/1/54	46	10/1/54
47	10/1/54	47	10/1/54
48	10/1/54	48	10/1/54
49	10/1/54	49	10/1/54
50	10/1/54	50	10/1/54

BRIDGE OVER SIDEBURNED LAKE
REINFORCING STEEL SCHEDULE
67345
DATE: 10/1/54
DRAWN BY: [Signature]
CHECKED BY: [Signature]

481-15-4-A

