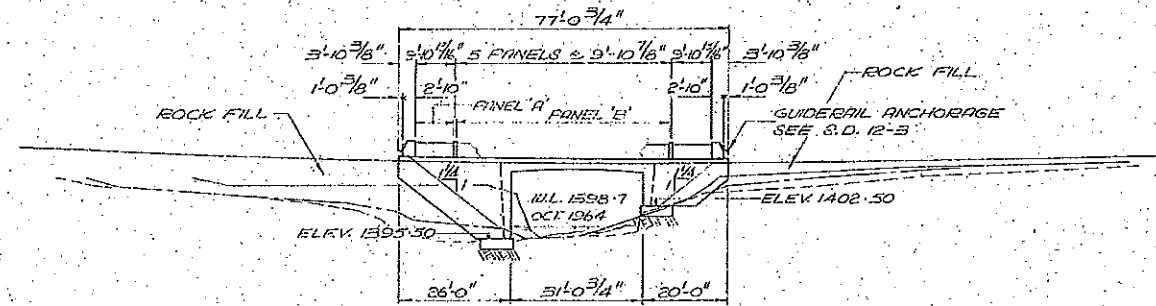
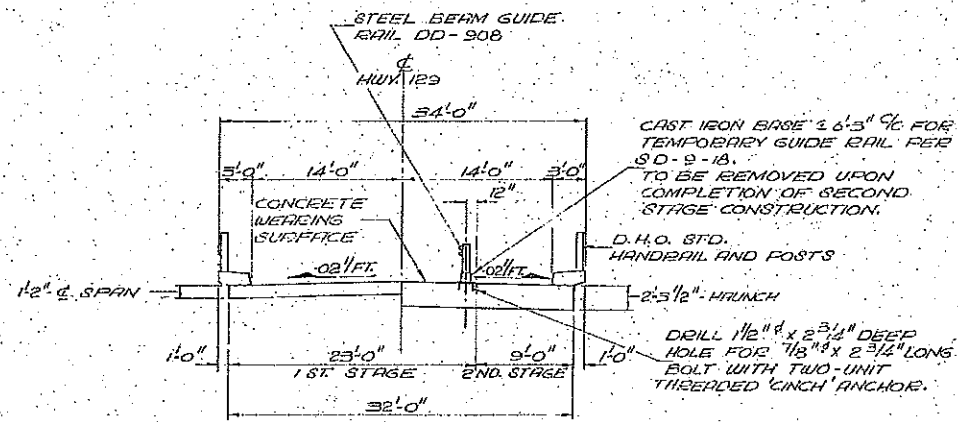


SITE PLAN
SCALE 1" = 20'-0"

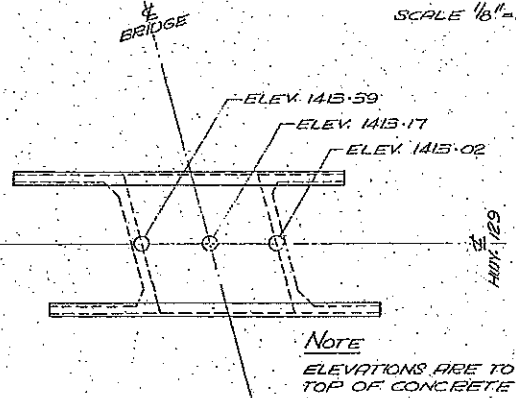


NOTE
NORTH GROUND PROFILE
Hwy. No. 129/SECUNLI PROFILE
SOUTH GROUND PROFILE

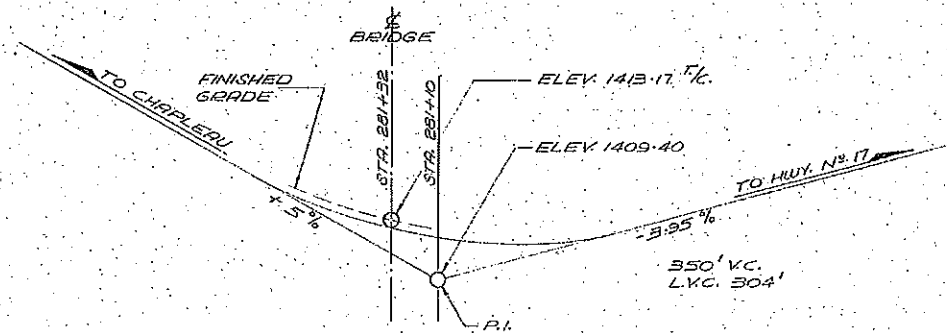
ELEVATION
SCALE 1" = 20'-0"



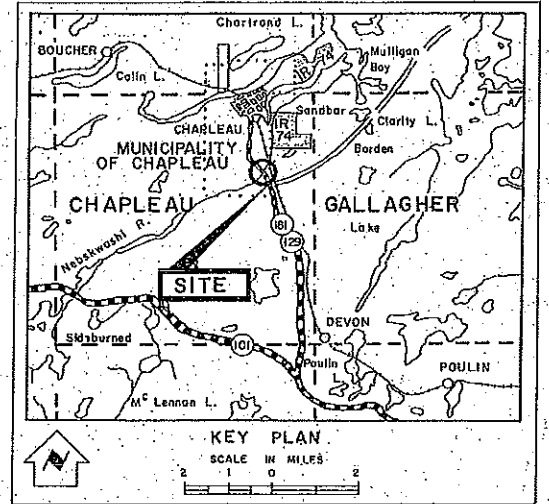
TYPICAL DECK SECTION
SCALE 1/8" = 1'-0"



DECK ELEVATIONS
SCALE 1" = 20'-0"



PROFILE OF PROPOSED REVISION LINE 'K'
N.T.S.



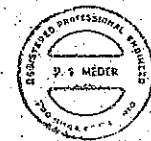
NOTES

- CLASS OF CONCRETE
3000 P.S.I.
- CLEAR COVER ON REINFORCING STEEL
- FOOTINGS
ABUTMENTS
RETAINING WALLS } 3"
- DECK TOP } 2"
- DECK BOTTOM } 1 1/2"
- CURBS } 2"

LIST OF DRAWINGS

- GENERAL PLAN --- D-5681-1
- BORE HOLE LOCATION --- 2
- FRAME & FOOTING DETAILS --- 3
- HANDRAIL DETAILS --- 4
- STANDARD DETAILS --- 5
- HANDRAIL DETAILS --- 6

REVISIONS	DATE	BY	DESCRIPTION



SKW 15° 0'
SIN. - .25002
COS. - .96593
TAN. - .26795
SEC. - 1.03528

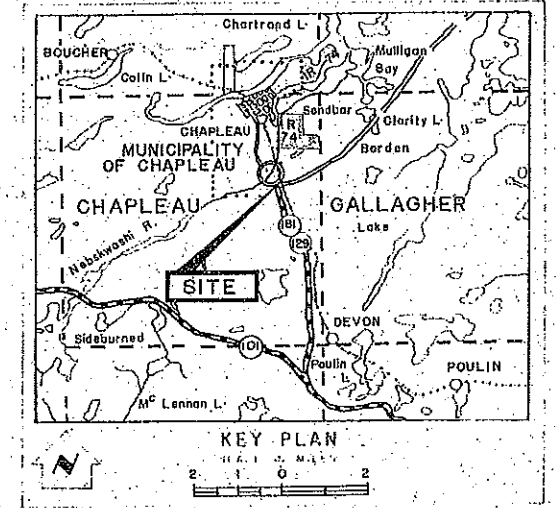
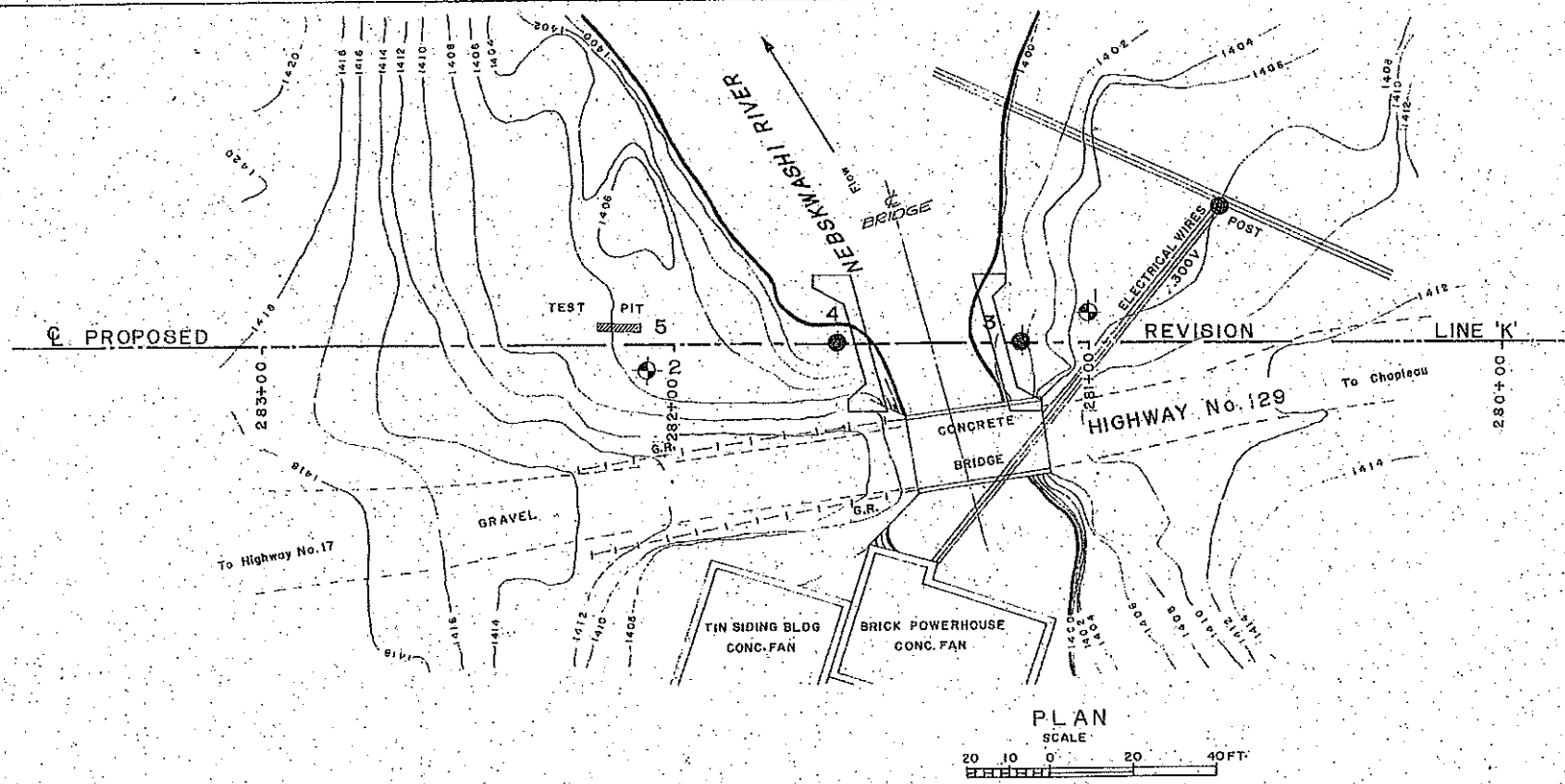
DEPARTMENT OF HIGHWAYS ONTARIO
BRIDGE DIVISION

NEBSKUWASHI RIVER BRIDGE
APPROXIMATELY 1/2 MILES SOUTH OF CHARLEAU
KING'S HIGHWAY No. 129 DIST. No. 1A
E.B. DIST. OF SUDBURY STA. 281+32 LINE 'K'
TWP. CHARLEAU LOT 3 CON. 1V

GENERAL PLAN

APPROVED: [Signature] SITE No. 46N-236 W.P. No. 102-65
DESIGN: D.S.H. CHECK: W.T.H. CONTRACT No. 26-252
DRAWING: E.O.W. CHECK: A.P. DRAWING No. D-5681-1
DATE: JUNE 64 LOADING: 1420-096

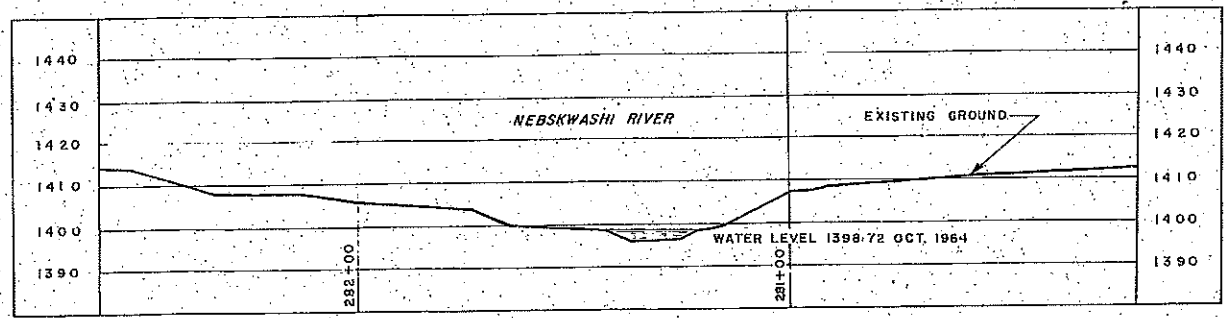
PRINT RECORD	No.	FOR	DATE



LEGEND

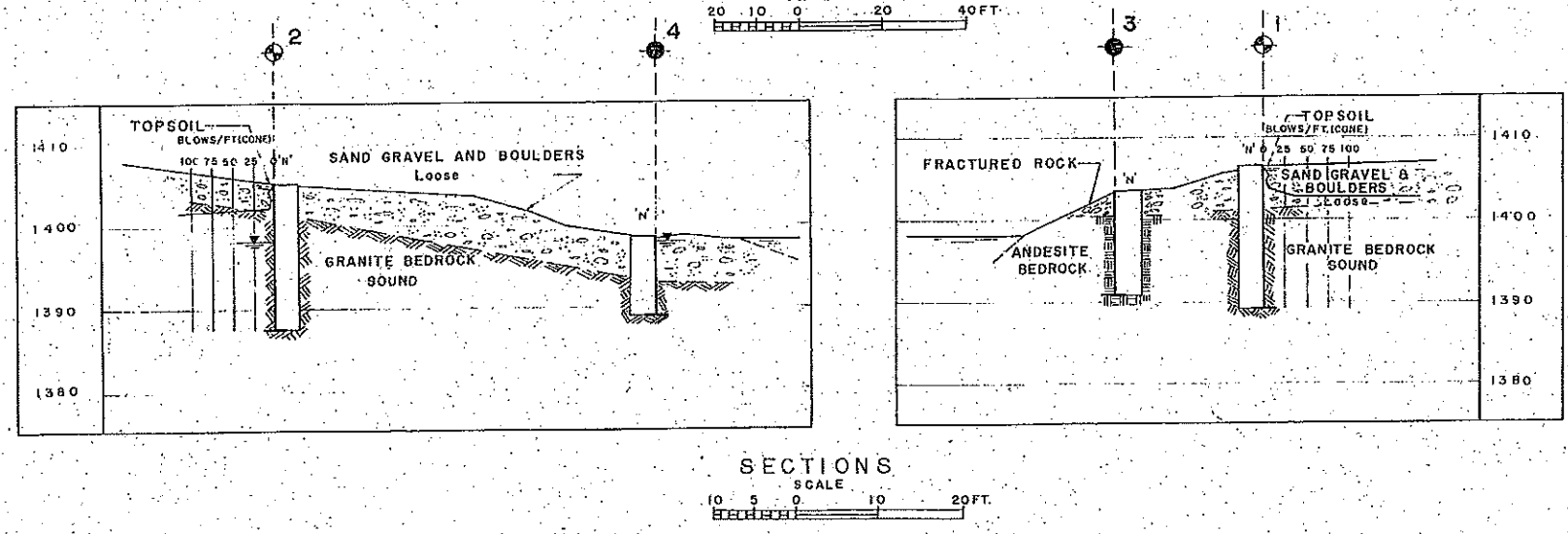
- Bore Hole
- ⊕ Cone Penetration Hole
- ⊕ Bore & Cone Penetration Hole
- ▽ Water Levels established at time of field investigation Feb. 1965.
- ▨ Test Pit

NO.	ELEVATION	STATION	OFFSET
1	1406.6	281+00	7.5 RT
2	1405.3	282+07	6.5 LT
3	1403.3	281+17	CL
4	1398.1	281+51	CL



B.M. ELEVS. 1411.19
 GEODETIC DATUM
 Nail In Top Of 0.4 Pop. Stp.
 950 Lt. Of Sta. 279+46.

NOTE
 The boundaries between soil strata have been established only at Bore Hole locations. Between Bore Holes, the boundaries are assumed from geological evidence and may be subject to considerable error.

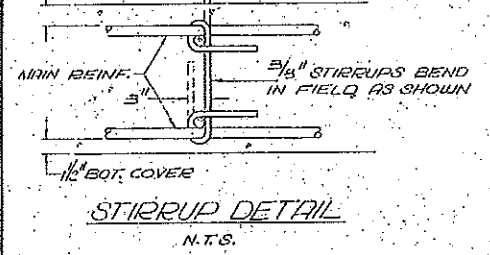
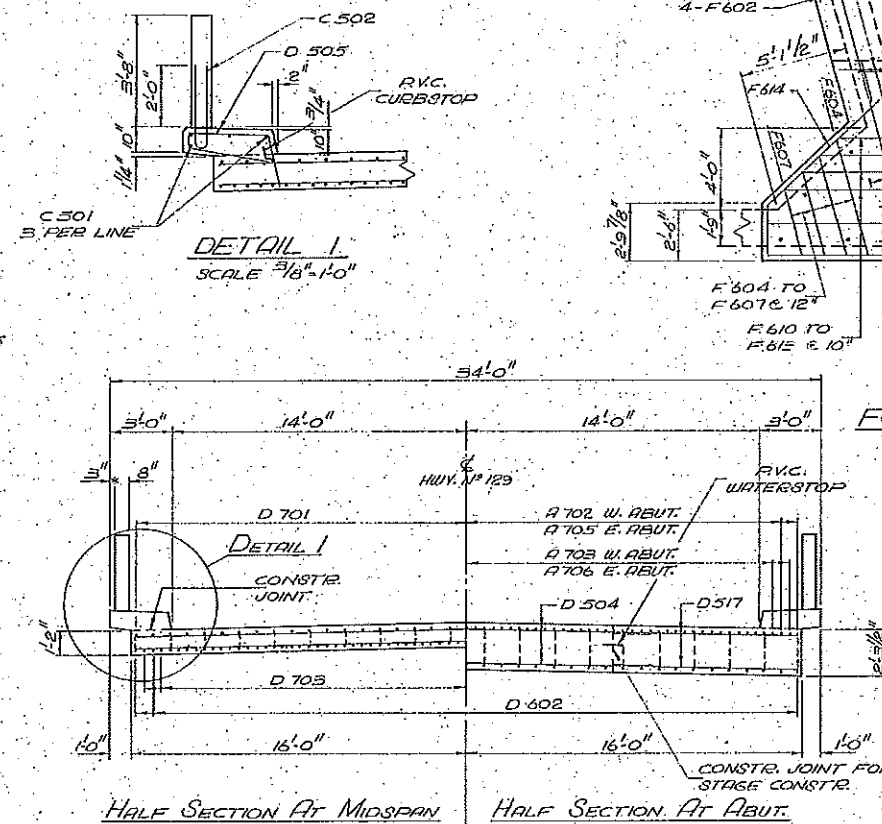
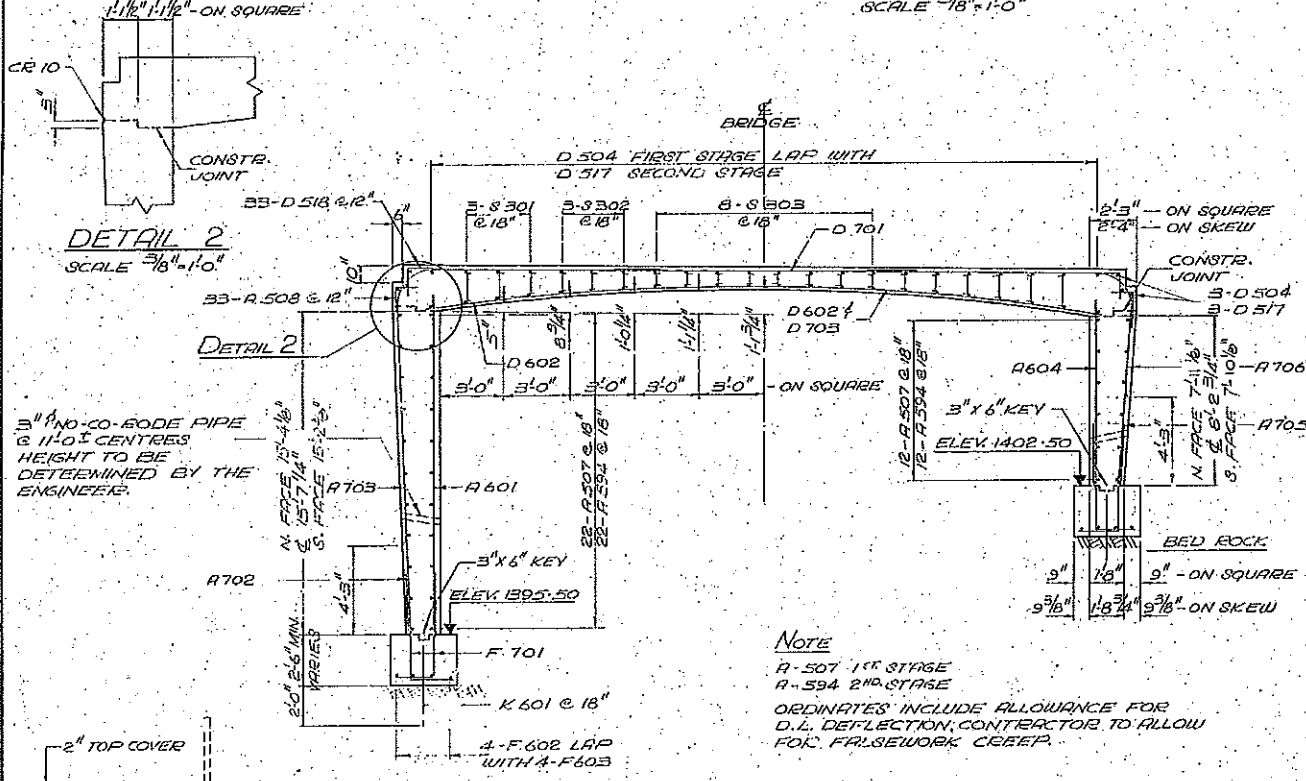
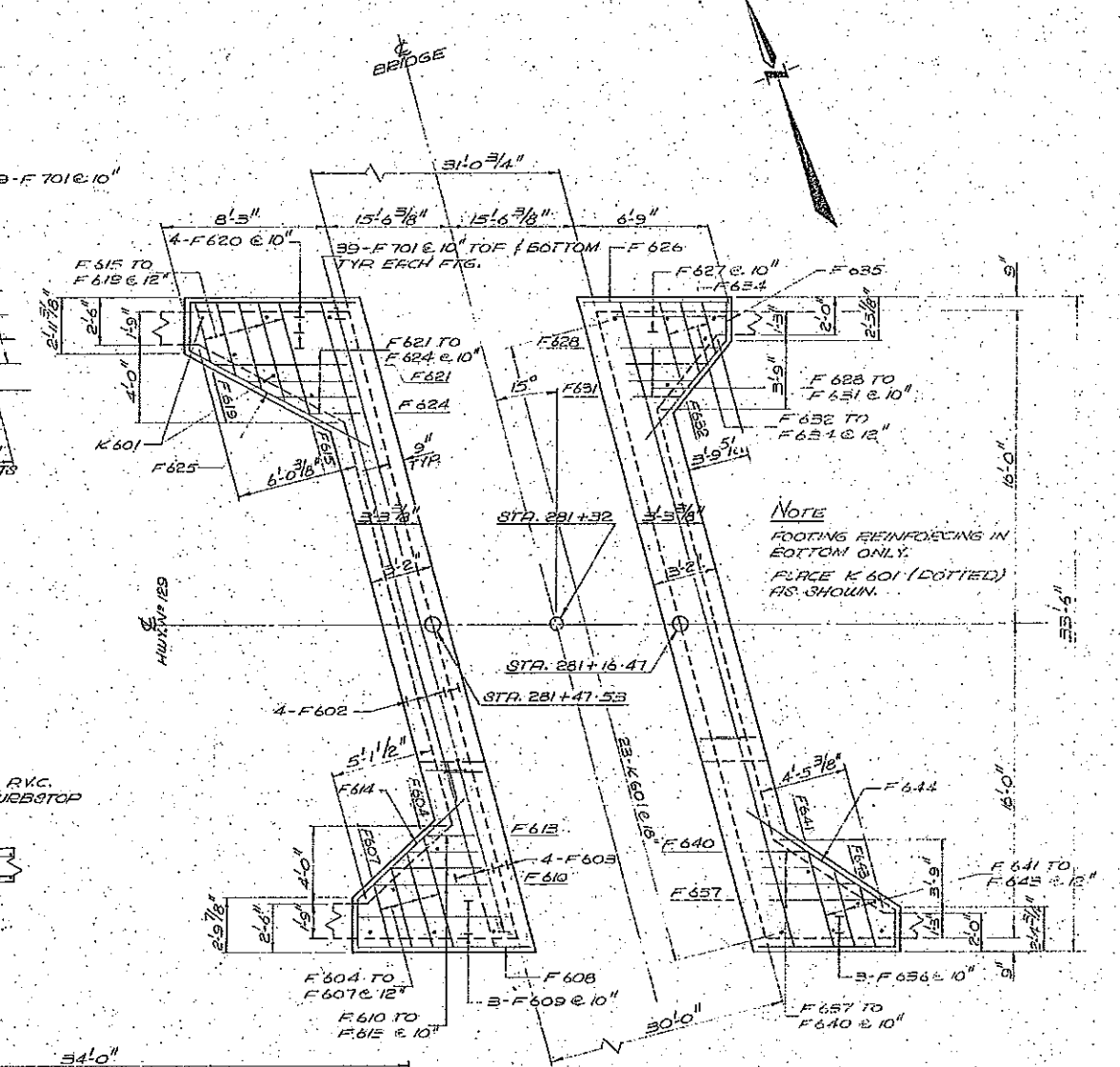
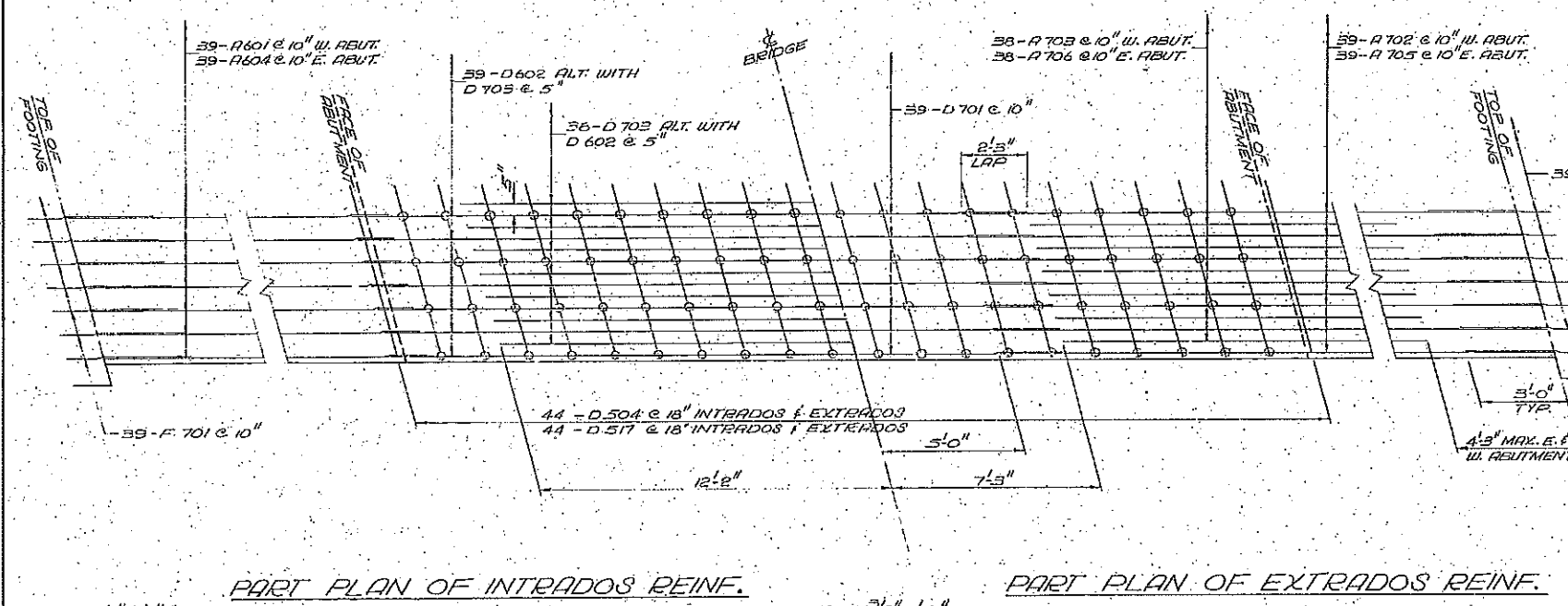


GEOCON LTD.	
DEPARTMENT OF HIGHWAYS - ONTARIO MATERIALS & RESEARCH DIVISION	
NEBSKWASHI RIVER	
KING'S HIGHWAY NO. 129 PROPOSED REV. LINE 'K'. DIST NO. 18	
DISTRICT OF SUDBURY	
TWP. CHAPLEAU	LOT 3 CON IV
BORE HOLE LOCATIONS & SOIL STRATA	
DRYER G.C.	CHECKED DBO
CREATED B.E.R.	CHECKED DBO
DATE 3 MAR. 1965.	SITE NO. 46-236
APPROVED D.B. Owen	CON. NO. 66258 D-5681-2

REF. NO. E-45341

Top # 482-236-1-4

NO.	FOUN.	DATE
1	05/13	1965



NOTE
A-507 1ST STAGE
A-594 2ND STAGE
ORDINATES INCLUDE ALLOWANCE FOR D.L. DEFLECTION, CONTRACTOR TO ALLOW FOR FALSEWORK CREEP.

NOTE
FOOTING REINFORCING IN BOTTOM ONLY.
PLACE K 601 (DOTTED) AS SHOWN.

PRINT RECORD		
No.	FOR	DATE
1	AS P.	10/2/66

REVISIONS		
No.	DATE	DESCRIPTION
1	10/2/66	REVISED HEIGHT OF 11'4"

DEPARTMENT OF HIGHWAYS ONTARIO
BRIDGE DIVISION

NEBSKWASHI RIVER BRIDGE

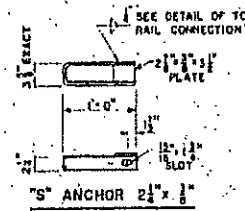
KING'S HIGHWAY No. 129 DIST. No. 15
 DIST. OF SUDBURY STA. 281+32 LINE K
 TWP. CHARLEQU LOT 3 CON. IV

FRAME & FOOTING DETAILS

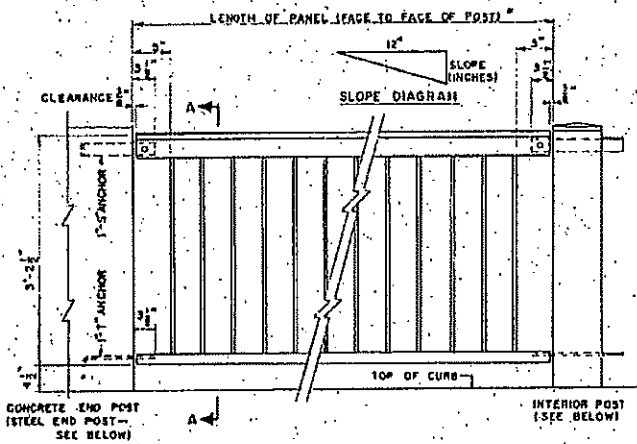
APPROVED: [Signature] DATE: 10/2/65
 W.P. No. 102-65

DESIGN	D.S.M.	CHECK	W.T.H.	CONTRACT	GG-258
DRAWING	E.O.N.	CHECK	G.F.M.S.	DRAWING	D-5681-3
DATE	JUNE 66	LOADING	420-376		

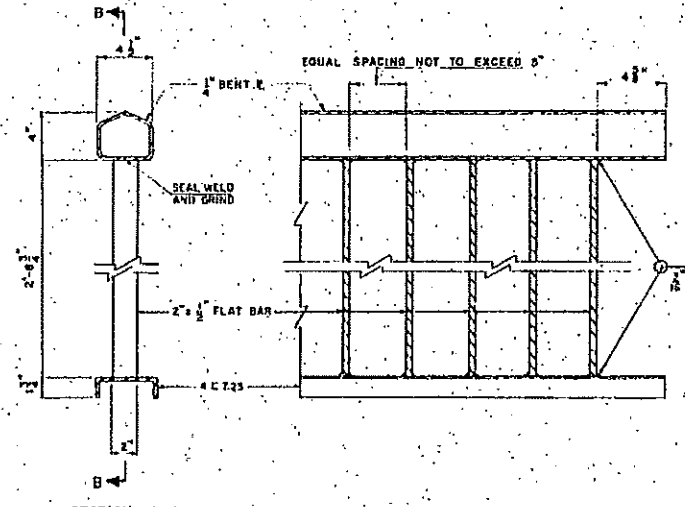
Twp # 486.736.3.A



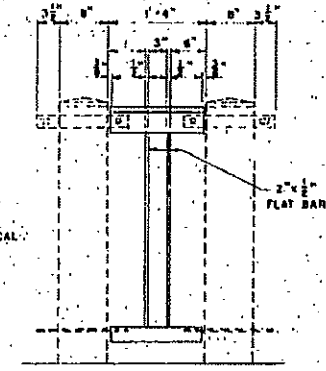
FOR LENGTH AND SLOPE OF PANELS, SEE REVISION OR DWG. 1



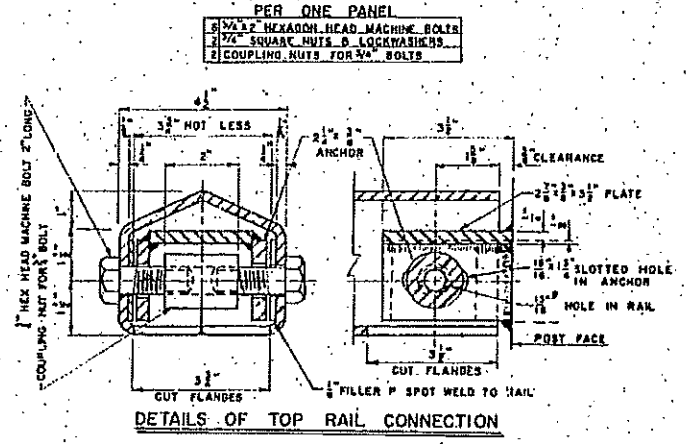
ELEVATION



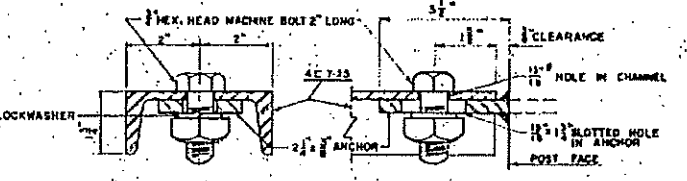
SECTION A-A



DETAILS OF STEEL FILLER PANEL



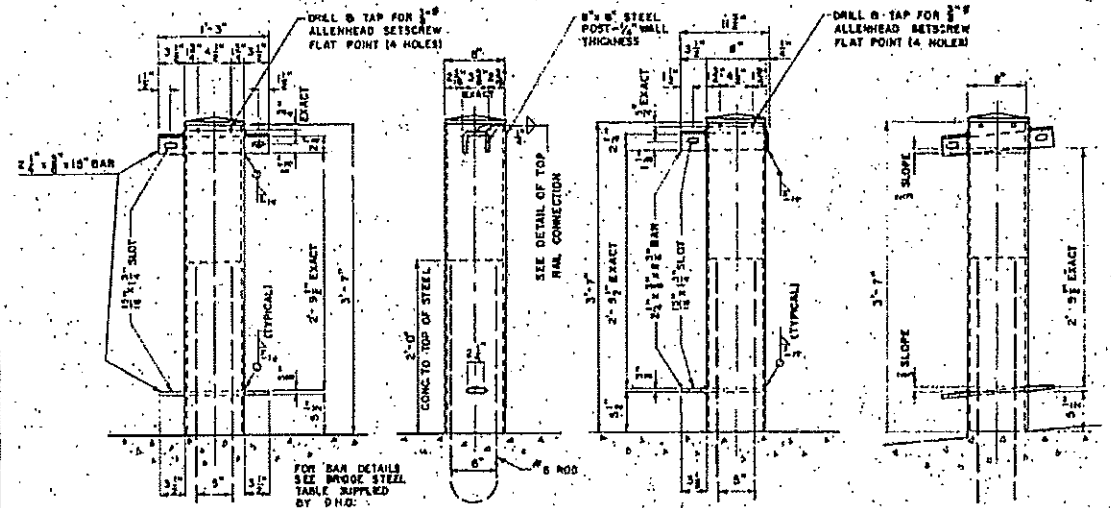
DETAILS OF TOP RAIL CONNECTION



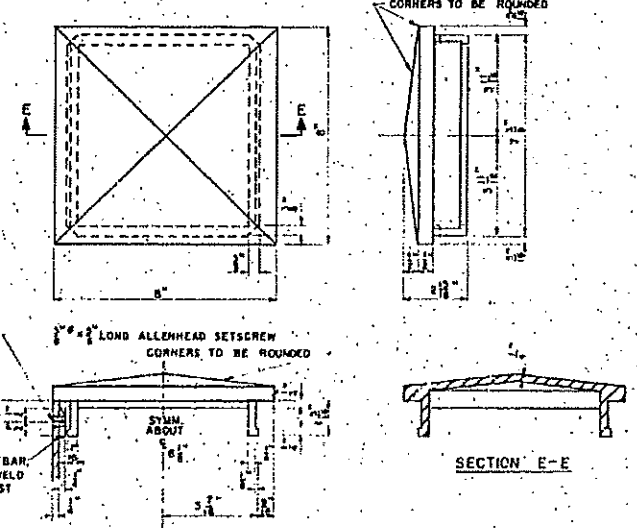
DETAILS OF BOTTOM RAIL CONNECTION

GENERAL NOTES:

1. ALL STEEL SHALL BE "MEDIUM STRUCTURAL STEEL" IN ACCORDANCE WITH C.S.A. 040-4.
2. ALL WALLEABLE IRON SHALL BE IN ACCORDANCE WITH A.S.T.M. A47, GRADE 2550.
3. ALL WELDING SHALL CONFORM TO C.S.A. W49 AND SHALL BE DONE BY A WELDER QUALIFIED UNDER THE PROVISIONS OF C.S.A. W47.
4. ELECTRODES USED SHALL BE TO A LOW HYDROGEN SPECIFICATION. MANUAL ELECTRODES SHALL BE E7015, E7016, OR E7018.
5. ALL SLOTTED HOLES SHALL BE FINISHED SMOOTH AND TRUE.
6. THE TOP SURFACE OF THE END OF THE TOP RAIL ELEMENT SHALL BE PUNCHED MARKED WITH A 3/4" LETTER. THE LETTER USED SHALL BE THE MARK LETTER AS SHOWN ON THE REQUISITION AND AS SHOWN ON DRAWING. FOR STRUCTURES ON A GRADE THE LETTER SHALL BE PUNCHED ON THE HIGH END OF THE PANEL. THE LETTER SHALL BE LEGIBLE AFTER GALVANIZING.
7. THE HANDRAIL PANELS AND POSTS SHALL BE HOT-DIPPED GALVANIZED IN ACCORDANCE WITH A.S.T.M. SPECIFICATION A153. ALL CAST CAPS, SETSCREWS, ANCHORS, NUTS, BOLTS, AND WASHERS SHALL BE HOT-DIPPED GALVANIZED IN ACCORDANCE WITH A.S.T.M. SPECIFICATION A153. ALL GALVANIZING SHALL BE DONE AFTER FABRICATION.



DETAILS OF STEEL POSTS



DETAILS OF ORNAMENTAL MALLEABLE IRON POST CAP AND POST REINFORCEMENT AT SETSCREW HOLES

PROJECT RECORD		
No.	FOR	DATE

REVISIONS

NO.	DATE	BY	DESCRIPTION

DEPARTMENT OF HIGHWAYS ONTARIO
ROAD DIVISION

NEBSKUAISHI RIVER BRIDGE

PROJ. HIGHWAY No. 129 DIST. No. 13
ED. DIST. OF SUDBURY, CTR. COLLIER LINE W/
TWP. CHIPLEWY LOT 21 CON. 12

STANDARD HANDRAIL PANELS & POSTS

APPROVED: [Signature] DATE: JAN-28-65

DESIGN	ADAPTED	CHECK	CONTRACT
DRAWING	R.E.	CHECK	NO.
DATE	JUNY 65	LOADING	NO. 5-2637-6

JWP #486-236-6-A

BD 38-1 REV. DATE 1962