

Ministry of Transportation of Ontario

Contract No. 2021-6048

Aggregate Source List (ASL)

Northwestern Region
District No. 61 - Thunder Bay

Highway Number : 17
Location : Hare Creek Culvert
Type of Work : Culvert Replacement
Date of Issue : October 26, 2021
Issued By : Northwest Region Geotechnical Section

No Guarantee Format ASL

Conditions of Information

(Conditions apply to sources shown on this ASL as well as any addendum)

1. This Aggregate Sources List (ASL) provides information on possible MTO/Crown, Wayside, and/or Letter of Approval sources only. The ASL for this Contract does not provide information on commercial sources. Commercial sources include:

- a licensed source; or
- a private source on Crown land under an Aggregate Permit; or
- an established private source on private land, subject to compliance with municipal by-laws and zoning, including a legal non-conforming use, in an area of the province not designated by the Aggregate Resources Act; or
- one of a number of specific sources in unorganized municipalities distant from large urban centres in parts of Eastern, Northeastern, and Northwestern Ontario.

For information regarding location of commercial sources, Contractors may refer to the following sources of information:

- Commercial Aggregate and Membership Directory, available through the Ontario Stone, Sand & Gravel Association (OSSGA);
- Aggregate License/Permit List, available through the Ministry of Natural Resources and Forestry (MNRF); and
- Aggregate Resources Inventory Papers (ARIPs) available through the Ministry of Northern Development and Mines (MNDM).

For enquiries related to a specific commercial source, Contractor may visit the Aggregate Unit of the Regional Geotechnical Section, by appointment, to access available Mineral Aggregate Inventory Data Bank (MAIDB) information, provided they have written consent from the source owner. Access to the information in MAIDB is provided for the convenience of the Contractor only. Since MAIDB information is dated and subject to interpretation, the information is not guaranteed. This is because of changes in aggregate specifications and inherent source variability.

2. The information provided in this ASL does not offer guarantees of material quality and quantity.
3. For MTO/Crown sources, the information applies only within the area, and to the depth of the power equipment investigation as shown on the field sketch and field logs for each source. It is based on samples, which are collected to represent a vertical working face. Should the contractor not excavate vertically over the same full face, or should he excavate a face which extends beyond these limits, then the information regarding the source shall be deemed to be void.
4. For sources listed on this ASL which have been tested with power equipment, additional information such

Conditions of Information

(Continued)

as field logs of test pits and rock boreholes, test results of samples, and limits of the tested area is available and may be reviewed at the appropriate Regional Geotechnical Section by appointment.

Due to the nature and limitations of this information, it is subject to interpretation and therefore is to be used only as a guide in the assessment of a source.

Information regarding depth of test pits/boreholes, stripping required, and estimated percent retained 4.75 mm, 25 mm, and 100 mm are presented in range format, and are taken from the respective test pit logs for each source.

5. Crushable material is defined as unprocessed material containing a minimum of 35% of particles larger than 4.75 mm by mass and, at the same time, containing a minimum of 25% of particles larger than 25.4 mm by mass.
6. Where applicable, information regarding designated haul routes, designated limits of extraction, operational constraints, etc. are shown for each source. Details are available for viewing at the appropriate Regional Geotechnical Section by appointment.
7. To achieve acceptable quality of the aggregate involved, certain production processes may be necessary.
8. Cobbles and boulders (max 600 mm) shall be used in the production of Granular A and Hot-Mix coarse aggregate.
9. Crushable material is not to be used for Granular B Type I, Granular B Type III, Earth Borrow, or Select Subgrade Material unless otherwise approved by the Regional Geotechnical Section.
10. The Contractor must provide the Regional Geotechnical Section with an operating plan showing how operations will be carried out on site, prior to operations commencing.
11. The operation of an Aggregate Permit Source shall be in accordance with the Aggregate Resources Act (as amended) and associated Aggregate Resources of Ontario Provincial Standards. Any and all contractors operating in MTO/Crown, Wayside, and/or Letter of Approval sources shall adhere to all site plan notes associated with the Aggregate Permit, Wayside Permit, and/or Letter of Approval conditions. The site plan and permits are available for viewing, by appointment only, at the appropriate Regional Geotechnical Section.
12. Any stockpiled aggregate material in the listed source(s) is available for use by the contractor and shall be accepted using the requirements specified elsewhere in the contract. If used by the contractor, any stockpiled aggregates shall be replaced by an equal volume of the same material meeting the requirements of the appropriate current Ontario Provincial Standard Specifications at the conclusion of the contract.

Conditions of Information

(Continued)

13. Any MTO/Crown sources not listed on this ASL may be made available, subject to the approval of the Head, Geotechnical Section pending their use on other MTO projects. For sources listed on this ASL, the Contractor must identify at the pre-start meeting, those sources which the Contractor will use on the contract.
The Contractor shall submit to the Contract Administrator a release of the source(s) that the Contractor does not intend to use in order to make these source(s) available for other MTO work. A copy of the release shall be forwarded to the Head, Regional Geotechnical Section.
14. All aggregates processed from MTO/Crown, Wayside, and/or Letter of Approval quarries require the use of an anti-stripping additive for use in Hot-Mix Surface Course Paving.
15. Aggregates identified as available free for use in this ASL shall only be used for the tender items listed in the contract documents. Any other use must be approved by the Regional Geotechnical Section prior to the activity taking place.

Abbreviations

ASL	=	Aggregate Source List
CA	=	Coarse Aggregate
DFC	=	Dense Friction Course
CONC	=	Concrete
CR	=	Crushable
FA	=	Fine Aggregate
H.D.B.	=	Heavy Duty Binder
M.D.B.	=	Medium Duty Binder
MOD	=	Modified
N/A	=	Not Applicable
OFC	=	Open Friction Course
SEL	=	Select
SURF	=	Surface
STRUC	=	Structure
TR	=	Treatment

Source No. G22-001-00

Name : Goodchild Lake #1 (Airport pit)
Location : 1.1KM W VIA HWY 17 FROM JCT PENNINSULA ROAD, S SIDE.
Township : Oneill
Lot Number(s) : 000
Concession(s) : 000
Permit : Yes

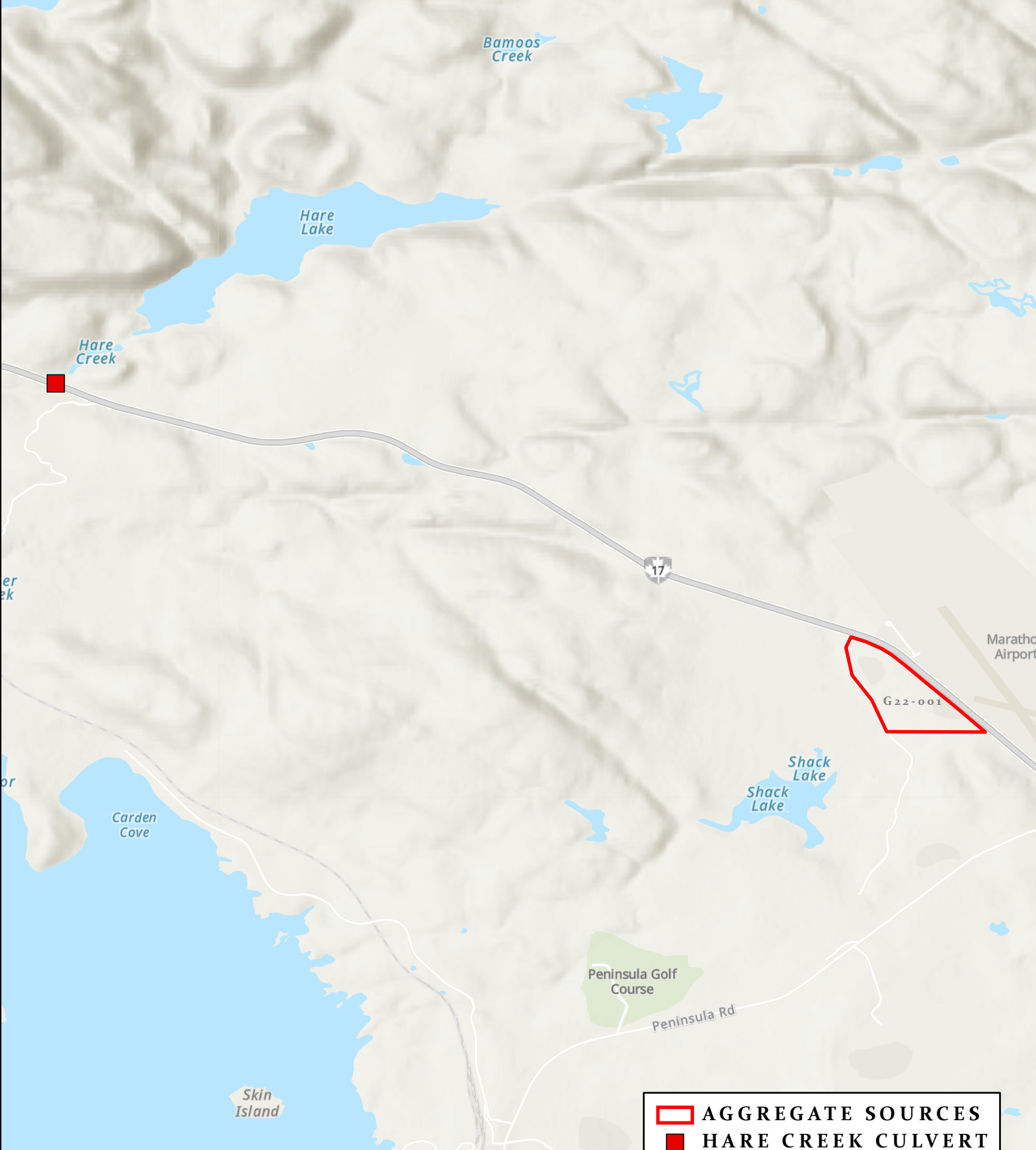
Pit / Quarry : Pit
Open / Unopen : Open
District : Thunder Bay
Region : Northwestern

Map Zone : 16
Northing, Easting : 5400289, 547693
Nearest Highway : Hwy 17 (0.0 km.)
Second Nearest Highway : Hwy 627 (7.6 km.)
Date Of Investigation : September 1, 2004
Type Of Investigation : Power Equipment

Remarks

1. Contractor will facilitate 1 week for winter sand production by Area Maintenance Contractor
2. Available free for purposes specified.

2021-6048 FINAL ASL HARE CREEK CULVERT REPLACEMENT



 **AGGREGATE SOURCES**
 **HARE CREEK CULVERT**

Sources: Esri, Airbus DS, USGS, NGA, NASA, CGIAR, N Robinson, NCEAS, NLS, OS, NMA, Geodastystyrelsen, Rijkswaterstaat, GSA, Geoland, FEMA, Intermap and the GIS user community, Sources: Esri, HERE, Garmin, FAO, NOAA, USGS, © OpenStreetMap contributors, and the GIS User Community