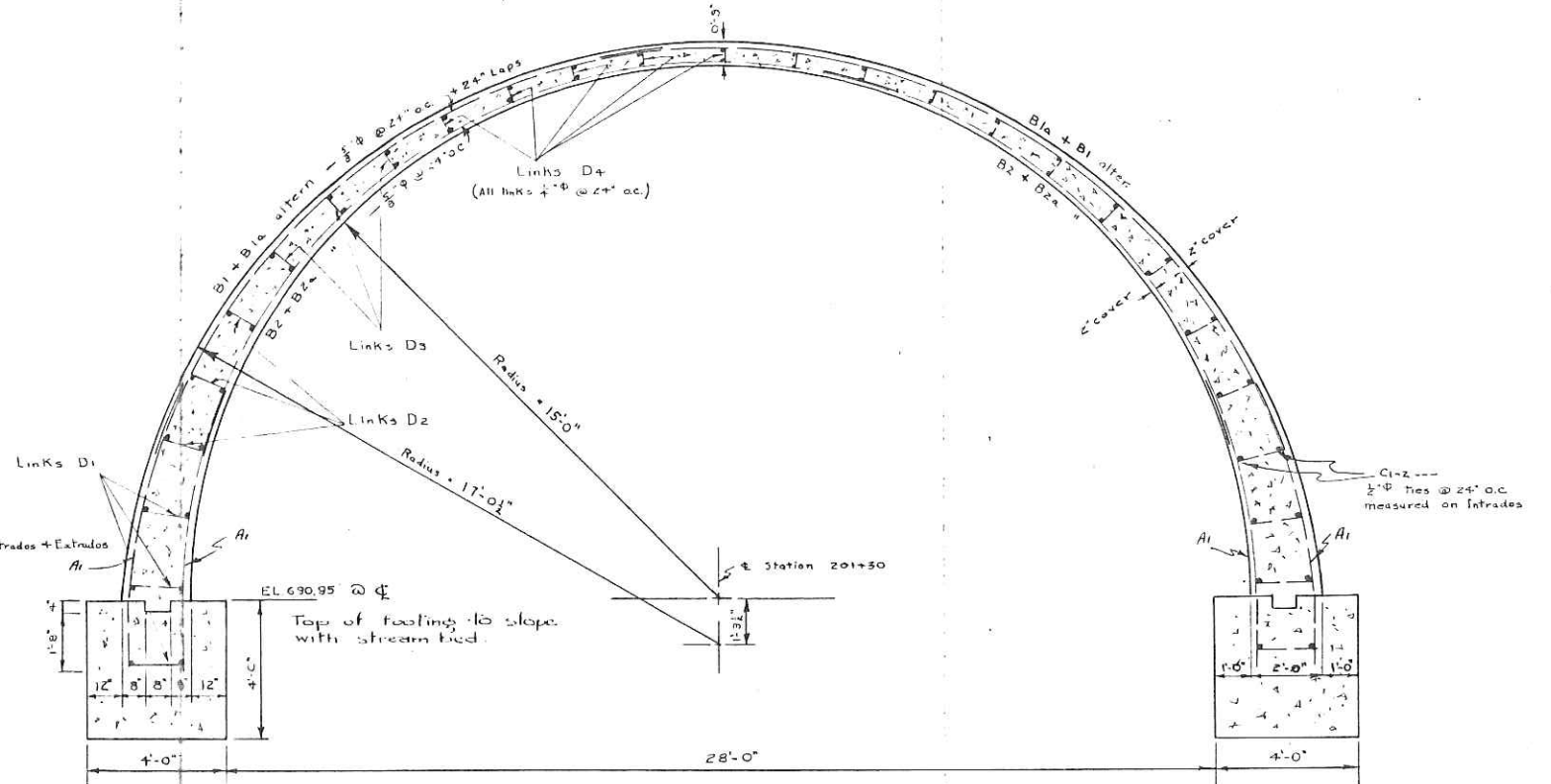
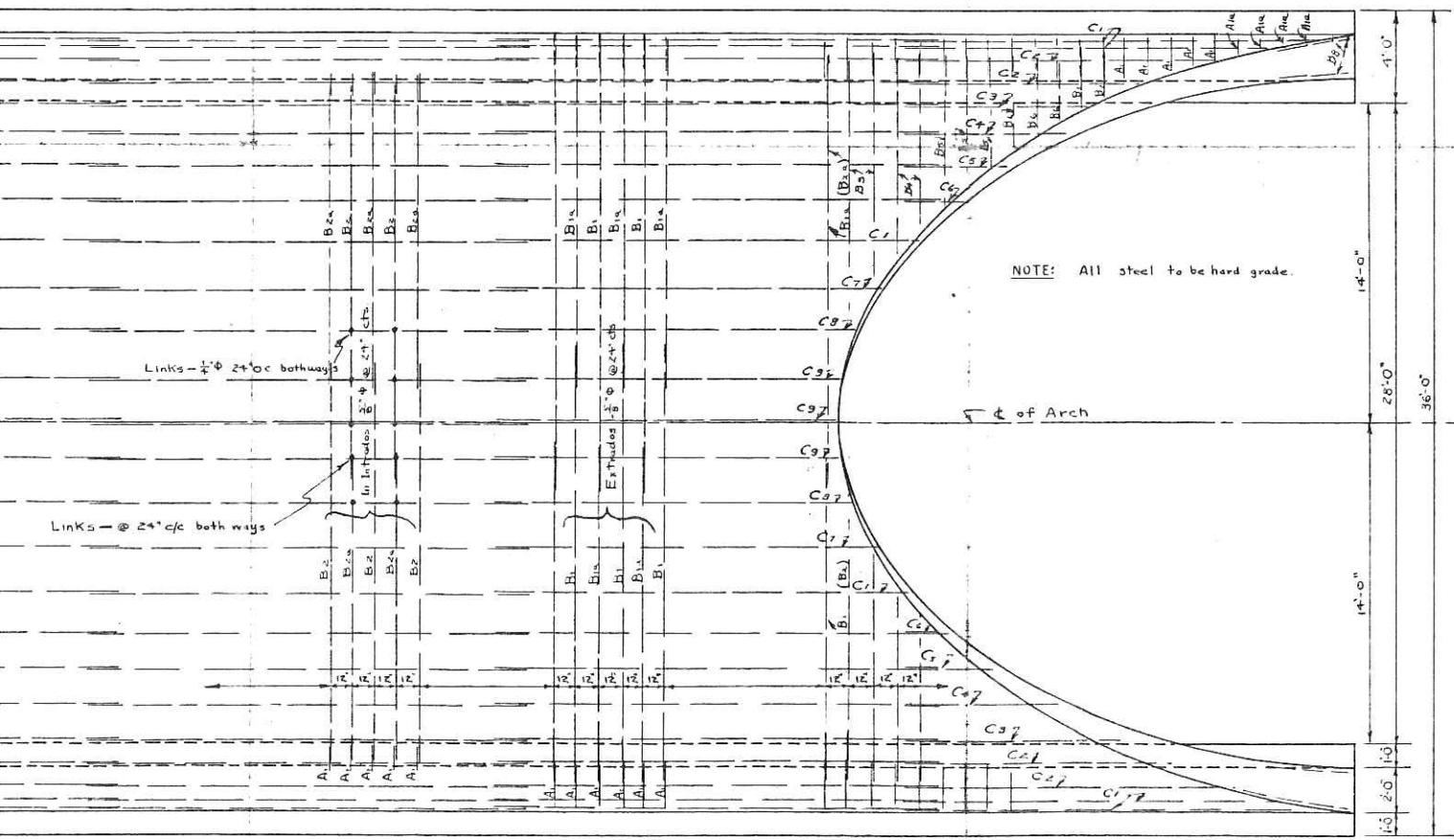


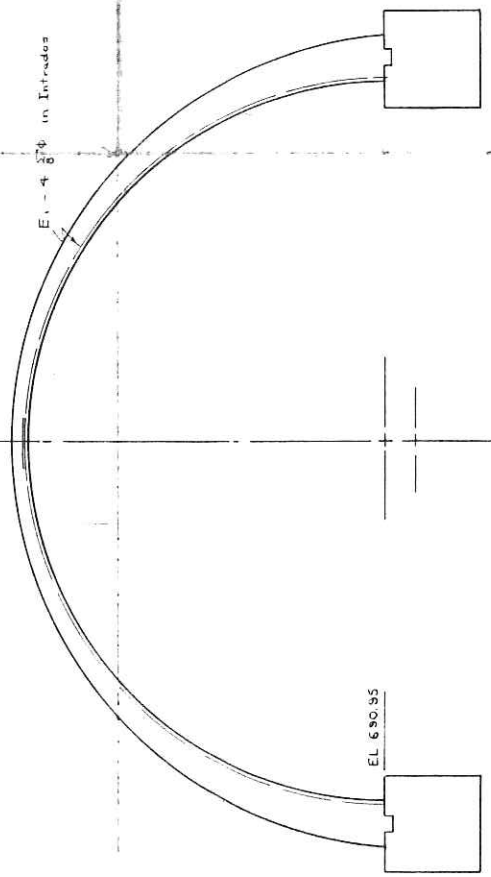
HALF LONGITUDINAL SECTION
SCALE 1/4" = 1'-0"



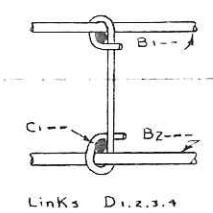
SECTION THROUGH ARCH
SCALE 3/8" = 1'-0"



HALF PLAN
SCALE 1/4" = 1'-0"



END ELEVATION
SCALE 1/4" = 1'-0"



NOTE TO DIV. ENGINEER.
Concrete work on this structure must not be commenced until monuments to fix control points have been erected and checked by the Div. Engineer.

NOTE TO CONTRACTOR.
Structure to be built according to D.H.O. General Specifications for Highway Bridges 1935 Form No. 9 and special specifications attached to the information to bidders sheet, extra copies of which may be obtained from the Div. Engineer. All construction joints must be approved by the Bridge Engineer.

CONCRETE MIX.
Footings:- Class B 1:2:4
Entire structure above footings:- Class A 1:1 1/2:3 1/2 with 1/2 lb of Pozzolite per bag of cement

Volume of Concrete
Frame - 275 Cu Yds.
Footings - 113 " "
Weight of Reinforcing Steel
Steel - 10 1/2 Tons

DEPARTMENT OF HIGHWAYS - ONTARIO - BRIDGE OFFICE - TORONTO		
BRIDGE OVER ANGLER CREEK		
THE KING'S HIGHWAY No. 17	Sta 201+50	DIV. No. 19
DISTRICT - THUNDER BAY	LOT	CON.
GENERAL PLAN		
APPROVED		
CHIEF BRIDGE ENGINEER		CHIEF ENGINEER