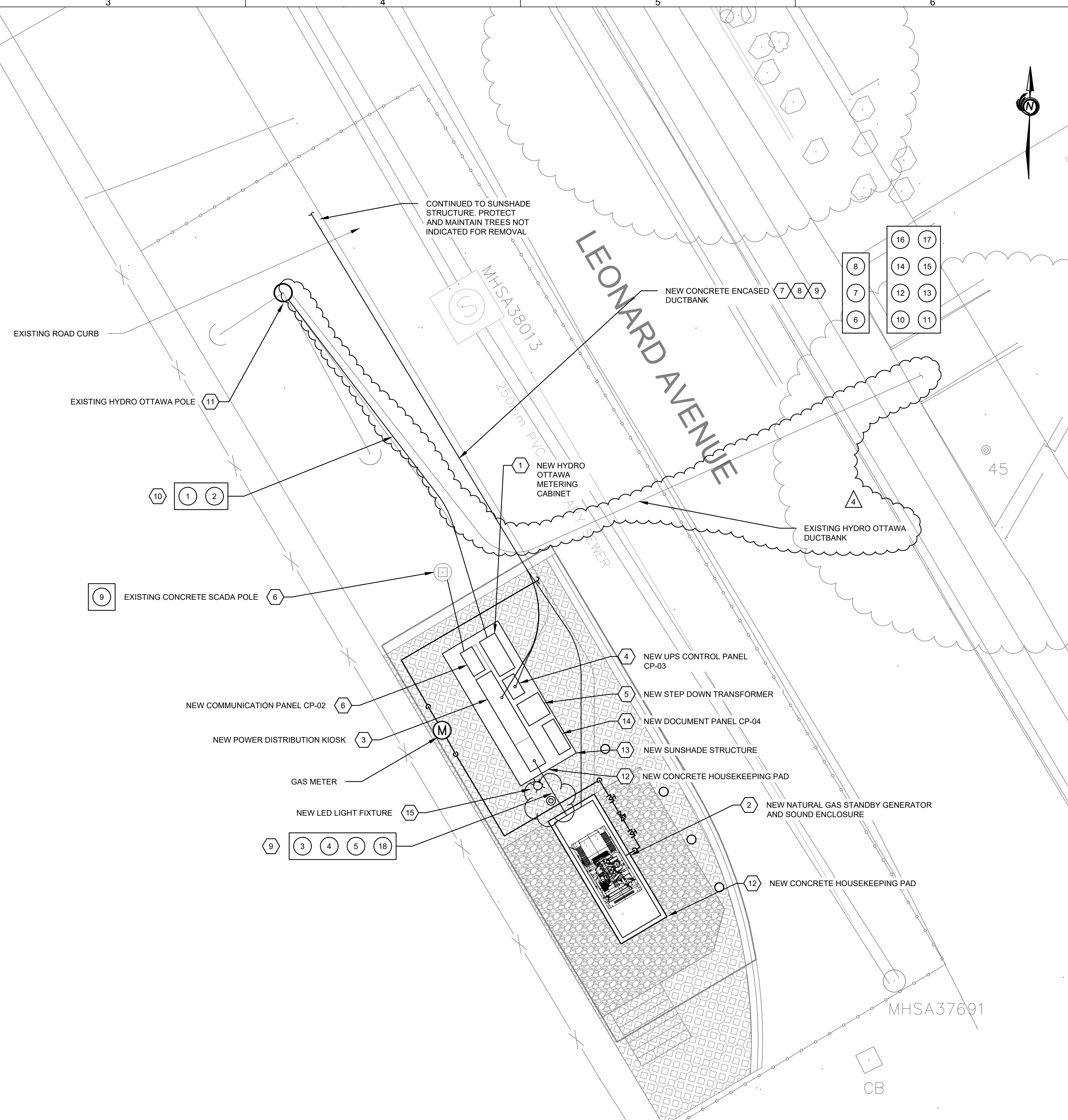




- GENERAL NOTES**
- EXCEPT AS NOTED OTHERWISE ALL EXISTING EQUIPMENT TO REMAIN IS SHOWN IN THIN SOLID LINES.
 - EXCEPT AS NOTED OTHERWISE ALL NEW EQUIPMENT IS SHOWN IN THICK SOLID LINES.
 - THE WET WELL IS A CLASS 1 ZONE 1 HAZARDOUS LOCATION.
 - ALL ELECTRICAL TO CONFORM TO SECTION 18, ANNEX J AND BULLETIN 22-4-3 OF THE ELECTRICAL SAFETY CODE.
 - THE LOCATION OF THE DUCTBANK ROUTING IS ONLY APPROXIMATE. PERFORM LOCATES PRIOR TO DUCTBANK EXCAVATION.

- CONSTRUCTION NOTES**
- PROVIDE A NEMA 4X METERING CABINET PAINTED WHITE AS PER HYDRO OTTAWA STANDARD DRAWING MCS0043, MCS0091 C/W DUAL LOCKING SYSTEM, 100A, 600V, SERVICE ENTRANCE RATED ENCLOSED BREAKER, NEUTRAL KIT, AND 7-JAW METER SOCKET BASE WITH ISOLATED NEUTRAL BLOCK. PROVIDE METERING FOUNDATION AS PER HYDRO OTTAWA STANDARD DRAWING MCS0035. METER PROVIDED BY HYDRO OTTAWA. FINAL CONNECTIONS ON POLE BY HYDRO OTTAWA.
 - PROVIDE A 20kW, 600V NATURAL GAS STANDBY GENERATOR NGR1 C/W CONTROL PANEL, GEN BREAKER, HEAT DETECTOR, COMBUSTION AIR DAMPER, AND LIGHTING PANEL IN A SOUND ATTENUATED ENCLOSURE.
 - PROVIDE NEW NEMA 4 POWER DISTRIBUTION KIOSK PAINTED WHITE C/W NEW ATS-1, MTS-1, LP-1, SPD, RECEPTACLE, LIGHTING, AND HEATER. MOBILE GENERATOR RECEPTACLE ASSEMBLY TO BE MOUNTED ON THE KIOSK EXTERIOR.
 - PROVIDE NEW UPS CONTROL PANEL C/W EBM, BYPASS CONTACTOR AND PILOT LIGHTS. REFER TO INSTRUMENTATION DRAWINGS FOR DETAILS.
 - PROVIDE NEW 15kVA, 600V-120/208V, CSA STEP DOWN TRANSFORMER C/W CSA TYPE 3R ENCLOSURE.
 - PROVIDE NEW COMMUNICATION PANEL. PROVIDE NEW COAX TRANSMISSION CABLE BETWEEN NEW COMMUNICATION PANEL AND EXISTING 2.4GHZ ANTENNA ON THE EXISTING CONCRETE SCADA POLE. PROVIDE NEW 75mm PVC CONDUIT STRAPPED TO THE EXTERIOR OF THE SCADA POLE. ROUTE NEW CABLE IN NEW CONDUIT.
 - PROVIDE A NEW CONCRETE ENCASED DUCTBANK BETWEEN THE SOFT STARTERS, POWER DISTRIBUTION KIOSK.
 - PROVIDE A NEW CONCRETE ENCASED DUCTBANK BETWEEN THE CP-01 CONTROL PANEL AND THE UPS PANEL.
 - PROVIDE A NEW CONCRETE ENCASED DUCTBANK BETWEEN THE POWER DISTRIBUTION KIOSK AND NGR1.
 - PROVIDE A NEW CONCRETE ENCASED DUCTBANK BETWEEN THE EXISTING HYDRO POLE AND METERING CABINET AS PER HYDRO OTTAWA STANDARD DRAWING UDS001. STUB UP SPARE CONDUIT BELOW THE COMMUNICATION PANEL.
 - PROVIDE A NEW 3-100mm DUCT CONCRETE POLE LATERAL AS PER HYDRO OTTAWA STANDARD DRAWING UDS0023 C/W GROUND RODS, 50mm PVC CONDUIT, 50mm-100mm REDUCER, WEATHERHEAD, AND MOUNTING HARDWARE. INSTALL 3m UP THE POLE.
 - NEW CONCRETE HOUSE KEEPING PAD BY CIVIL. COORDINATE EXACT LOCATION OF CONDUIT STUBS WITH APPROVED KIOSK AND GENERATOR SHOP DRAWINGS PRIOR TO POURING THE PAD.
 - NEW SUN SHADE STRUCTURE BY STRUCTURAL.
 - PROVIDE NEW DOCUMENT PANEL. REFER TO INSTRUMENTATION DRAWINGS FOR DETAILS.
 - PROVIDE NEW LED LIGHT FIXTURE MOUNTED TO THE SUNSHADE STRUCTURE. PROVIDE NEW POWER WIRING BETWEEN PANEL LP-1 AND LED FIXTURE.

NEW CONCRETE ENCASED DUCTBANK SCHEDULE					
NO.	FROM	TO	DIA.	SERVICE	CONDUCTOR(S)
1	HYDRO POLE	METERING CABINET	103mm PVC	600V	REFER TO SINGLE LINE DIAGRAM
2	HYDRO POLE	STUB UP AT METERING CABINET	103mm PVC	SPARE	EMPTY C/W PULL STRING
3	ATS-1	NGR1	53mm PVC	600V	REFER TO SINGLE LINE DIAGRAM
4	LP-1	LP-2	53mm PVC	120/208V	REFER TO SINGLE LINE DIAGRAM
5	LP-1	NGR1	53mm PVC	SPARE	EMPTY C/W PULL STRING
6	PSRSP01 SS	DP-1	53mm PVC	600V	REFER TO SINGLE LINE DIAGRAM
7	PSRSP02 SS	DP-1	53mm PVC	600V	REFER TO SINGLE LINE DIAGRAM
8	SUNSHADE STRUCTURE	DP-1	53mm PVC	SPARE	EMPTY C/W PULL STRING
9	SCADA POLE	CP-02	78mm PVC	2.4GHz	REFER TO NETWORK DIAGRAM
10	UPS PANEL	CP-01	53mm PVC	120V UPS	REFER TO SINGLE LINE DIAGRAM
11	UPS PANEL	CP-01	53mm PVC	DI	REFER INSTRUMENTATION DRAWING
12	NGR1	CP-01	53mm PVC	DI	REFER TO INSTRUMENTATION DRAWINGS
13	NGR1	CP-01	53mm PVC	SPARE	EMPTY C/W PULL STRING
14	CP-02	CP-01	53mm PVC	COMS	2X CAT6
15	LP-1	CP-01	53mm PVC	120V	REFER TO SINGLE LINE DIAGRAM
16	ATS	CP-01	53mm PVC	DI	REFER TO INSTRUMENTATION DRAWINGS
17	ATS	CP-01	53mm PVC	DO	REFER TO INSTRUMENTATION DRAWINGS
18	ATS	NGR1	53mm PVC	START	REFER TO INSTRUMENTATION DRAWINGS



A
LEONARD SITE PLAN - CONSTRUCTION
1:50

THIS DRAWING WAS PUBLISHED ON Monday, December 13, 2021
THIS DRAWING WAS PRINTED USING AN A3 (11x17) INCH PLOTTER
THIS DRAWING SIZE IS 11x17 INCHES (279.4x431.8mm) AT 1:50 SCALE
THIS DRAWING SIZE IS 11x17 INCHES (279.4x431.8mm) AT 1:50 SCALE

No.	Issue/Revision Description	By	Date
4	ISSUED FOR ADDENDUM 4	J.L.C.	2021.12.13
3	ISSUED FOR TENDER	J.L.C.	2021.07.23
2	ISSUED FOR 90% DESIGN REVIEW	J.L.C.	2021.02.12
1	ISSUED FOR 66% DESIGN REVIEW	J.L.C.	2020.11.26

Scale:
Facility:
LEONARD WWPS

Project Name:
LEONARD WWPS RELIABILITY UPGRADES

Drawing Title:
ELECTRICAL LEONARD PUMPING STATION SITE PLAN CONSTRUCTION

Drawing Cross reference No.:

City Contract No.: CR013786
Consultant Project No.: 1634-01595

Drawing No.: **E205**
Sheet No.: of